

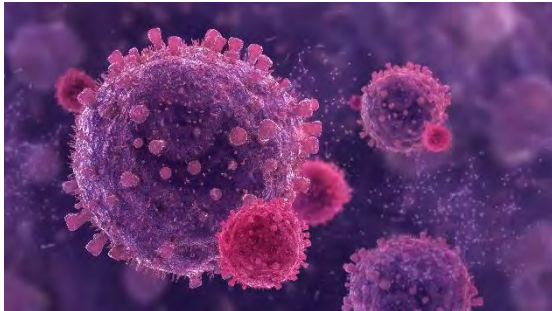
# Illegal wildlife trade, zoonotic diseases and pandemics: An emerging issue for Asia's high mountain ecosystems

Rishi Kumar Sharma & Femke Hilderink - Koopmans  
WWF  
21st May 2021

## The Symptoms

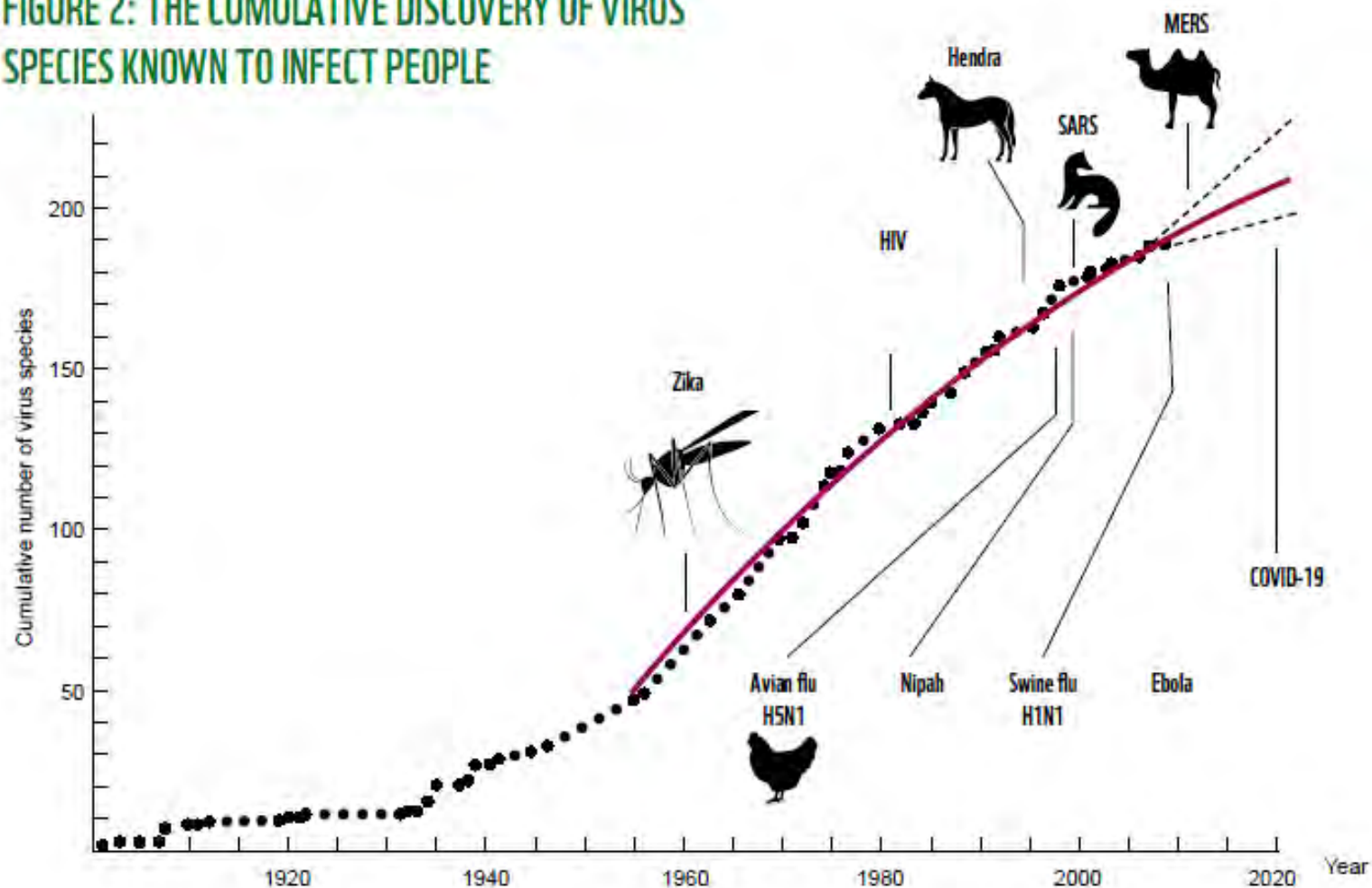
---

1. Over the last 30 years, ~ 67 to 70 % of new diseases that emerged in humans have zoonotic origins
2. These are symptoms of humanity's broken relationship with nature
3. The risk of a new zoonotic disease emerging in the future is higher than ever





**FIGURE 2: THE CUMULATIVE DISCOVERY OF VIRUS SPECIES KNOWN TO INFECT PEOPLE**



## The diagnoses

---

The key drivers of acceleration of zoonotic diseases are

- The **illegal and high risk trade** and consumption of wildlife- precipitated by wet markets and poor food safety standards
- Unsustainable food system driving **large scale conversion of land** to agriculture





## Examples

---

**The SARS Pandemic of 2002-2003:** evidence not conclusive, but the initial disease outbreak [attributed to human contact with infected palm civets and racoon dogs](#) in a wildlife market in Guangdong province

**Ebola outbreaks in west and central Africa:** Researchers believe that the [extensive deforestation in these regions increases contact between humans and potential Ebola host species](#), such as fruit bats and primates, leading to greater potential for transmission from hosts to humans

**Nipah virus outbreak in 1998:** Research suggests that the spillover of Nipah from bats to pigs and then to humans during the 1998 outbreak likely resulted from [the intensification of pig husbandry and mango production](#)



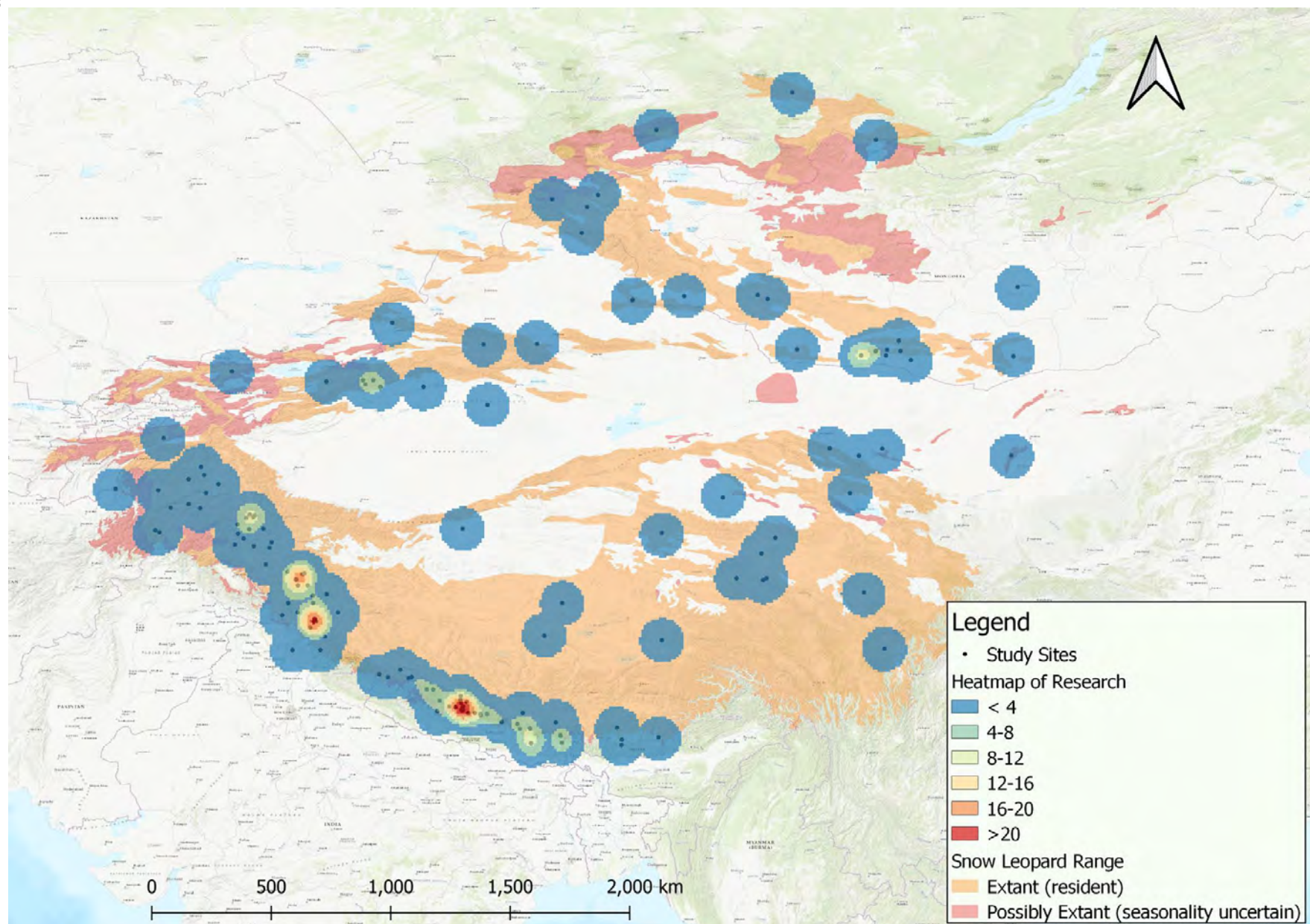
# The connection between pandemics, HWC and Illegal Wildlife Trade

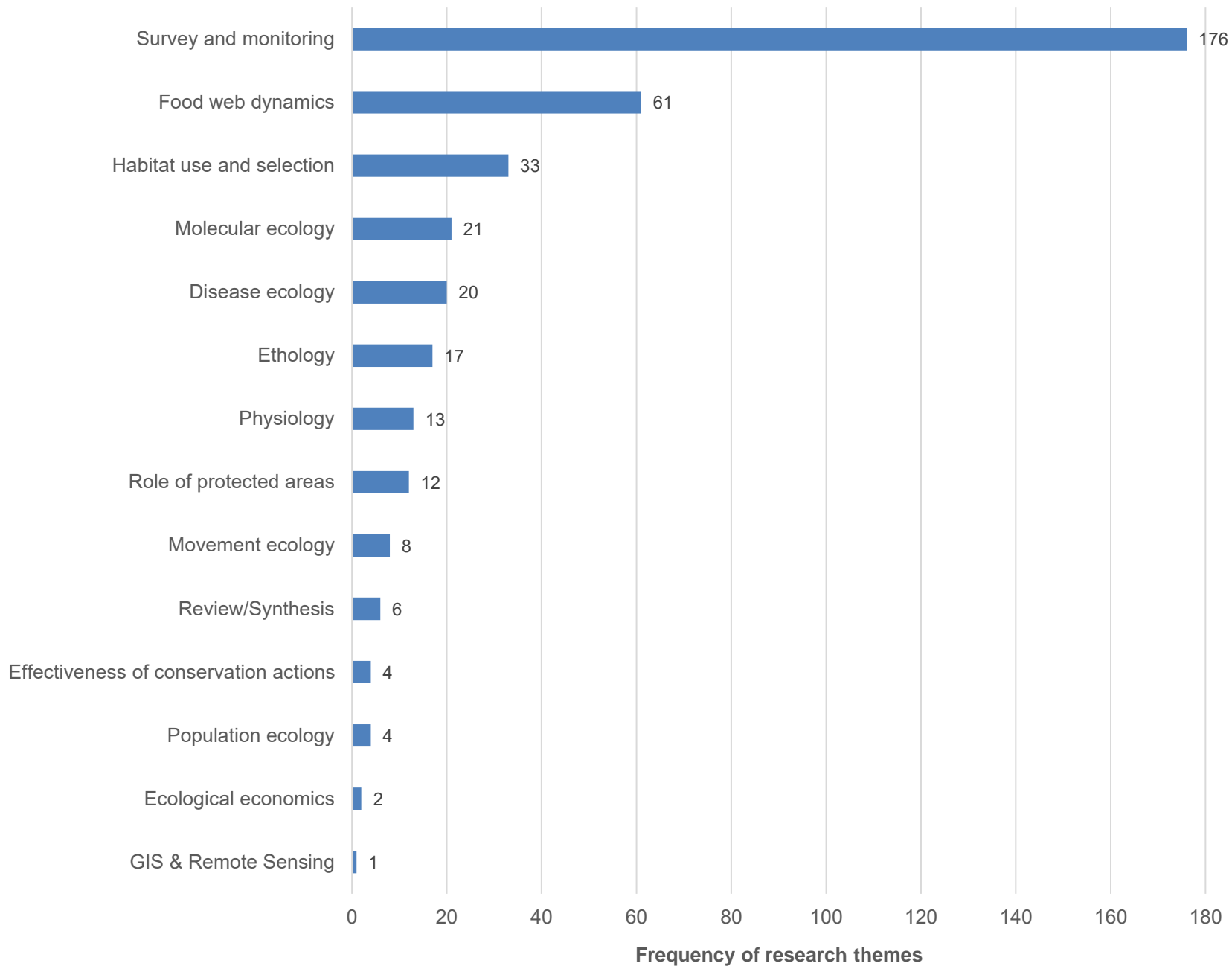
---

- Between 221-450 snow leopards are estimated to be poached annually
- Of these, 55% are killed in retaliation for livestock predation, 21 % are killed for trade & 18% are taken out by non-targeted methods such as snares
- Experts estimate a 50-50 chance that a poaching event will follow a depredation event
- On an average 60% of retaliatory and non-targeted poaching incidents result in an attempt to sell









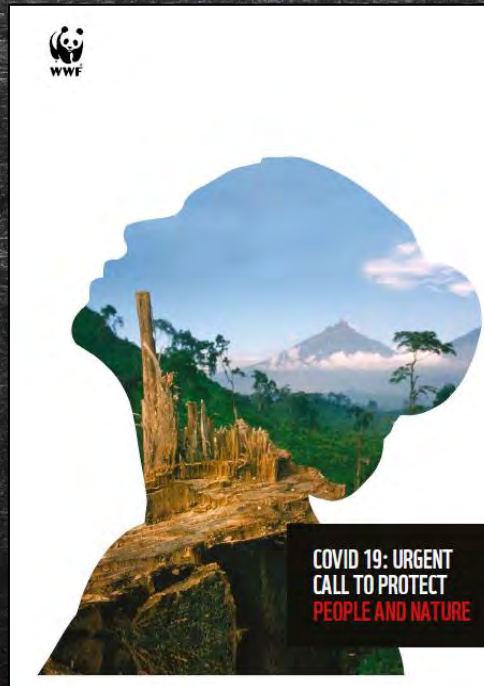


## Opportunities and way forward

---

- Limited progress has been made in tackling high risk wildlife trade, fragmentation and loss of our forests
- We need to **stop illegal, unregulated and high-risk wildlife trade** and consumption
- **Support sustainable food systems** that halt encroachment of nature
- **Rebuild the relationship between people and nature** based on sustainable, just and holistic goals when we think of economic recovery.









We need to rethink and  
mend our relationship  
with nature





**+100**

---

WWF is in over  
100 countries, on  
6 continents

**1961**

---

WWF was founded  
In 1961



**+5M**

---

WWF has over  
5 million supporters

**+16M**

---

WWF has over  
16 million followers on Facebook,  
Twitter and Google+