

Leveraging partnership:

Koshi DRR Knowledge Hub (KDKH) – country
chapter

Santosh Raj Pathak, Partnership Officer

Nishikant Gupta, Program Officer

International Centre for Integrated Mountain Development

Kathmandu, Nepal

July 31, 2019

Koshi Disaster Risk Reduction Knowledge Hub

Contributing to a resilient Koshi basin through better understanding and evidence-based decision making on transboundary water-related DRR.



FEATURED

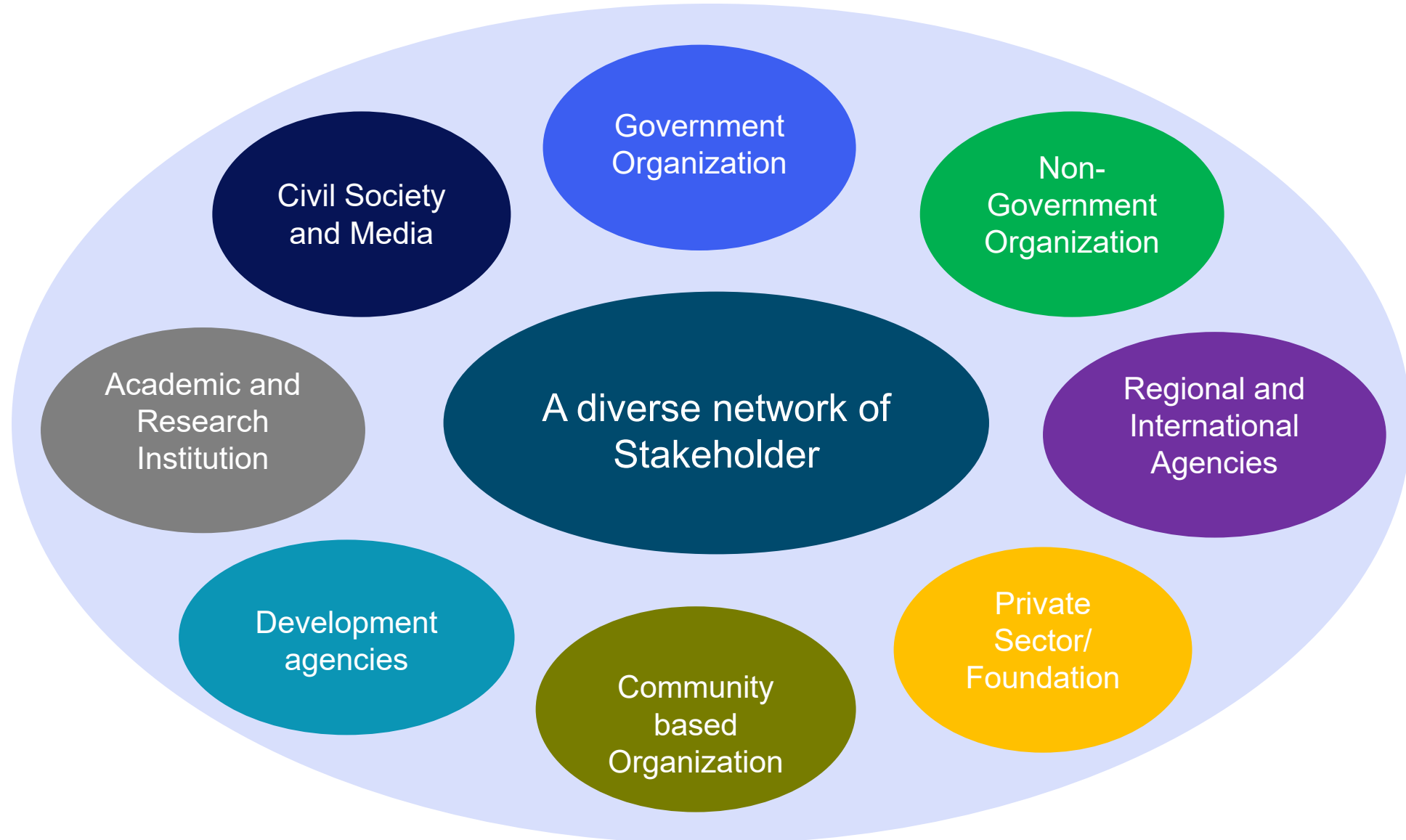
Koshi Disaster Risk Reduction Knowledge Hub, 30 - 31 July, Gyan Bhavan, Patna, Bihar, India

Back to Top

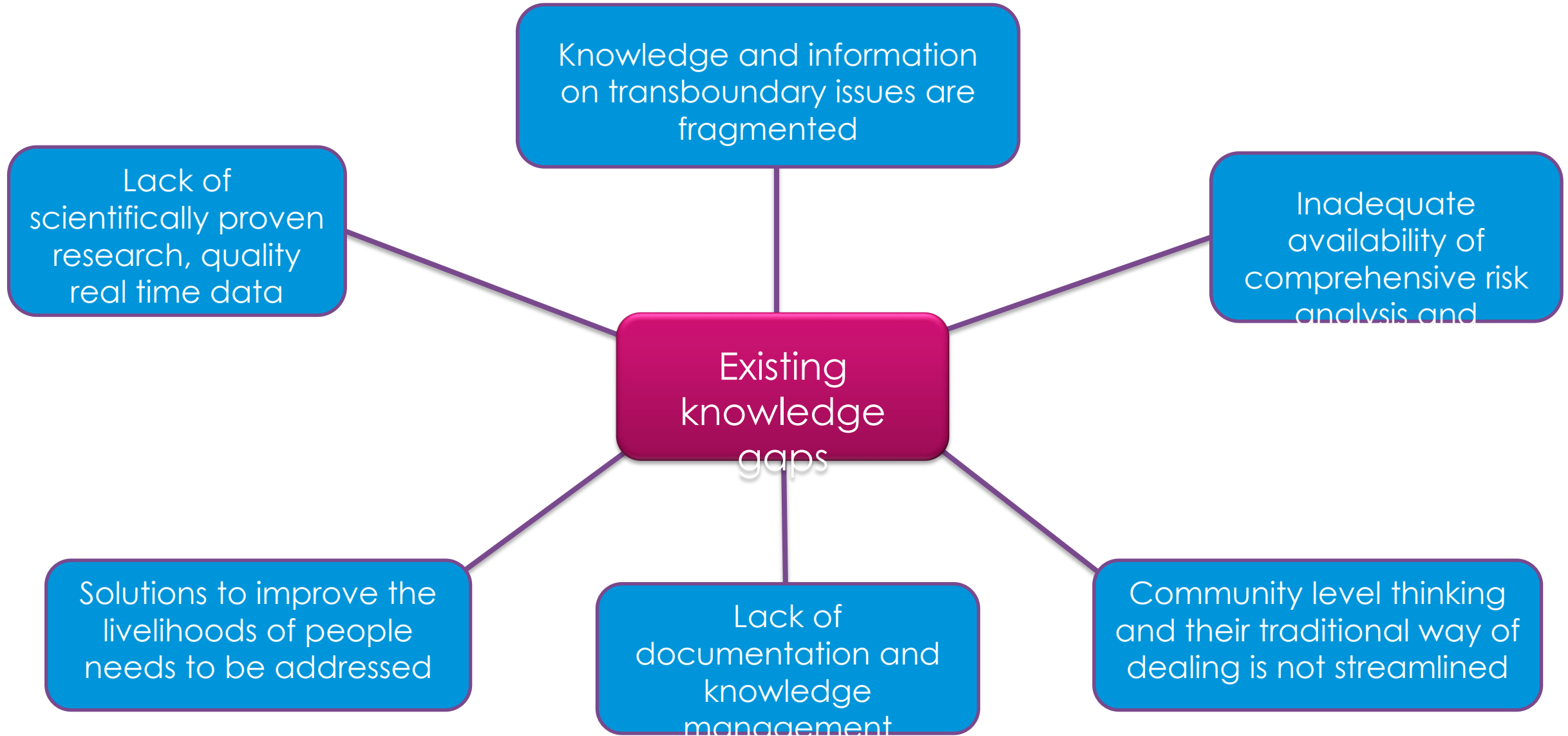
Partnership for KDKH

**Coming
Together**

Why do
we need KDKH?



What are the existing knowledge gaps in addressing DRR hub in the Koshi basin?



What can be the possible role of the knowledge hub in addressing the key risks?



What kind of information do you think are more relevant to be showcased in the knowledge hub?



Disaster preparedness
Resilience procedure IEC materials
Audio-video Collaborative projects
Scientifically proven Bad practice
Common database
Early warning flood information system Success stories Existing knowledge
Stories Best practices Scoping studies
Ideas & methodologies Criteria for critical watershed
Community & indigenous knowledge
Challenges & case studies
Reports and papers

Partnership for KDKH

**Coming
Together**

Why do
we need KDKH?

**Growing
Together**

What did
we do?

Inception workshop of KDKH

December 11-12, 2018

- Short, Medium and Long term priorities
- Structure of the Hub
- Working areas of the hub
- Initiated discussion for the sustainability

- **Thematic groups** with **common interests**, joint project.
- **KDKD Secretariat** currently at **ICIMOD**
- Various scientific departments related to DRR in each country, **interaction** amongst themselves, and **coordination** through core department in each country.
- **Virtual platform** could have central server at ICIMOD and used to **reduce duplication** of activities, **share solution** focused ideas and reports.

Key Outcomes of Inception workshop

Common Vision:

Contribute to a resilient Koshi Basin through better understanding and evidence based decision making on transboundary water related disaster risk reduction

Scope of the Hub:

- Promote **transboundary collaboration** across the Koshi Basin through scientific knowledge and experience sharing related to water induced disasters for common understanding and improved decision making in the basin
- **Strengthen science-policy-practice** interface through developing and showcasing solution oriented research and practices
- Synthesize and provide recommendation for **policy advocacy** that takes into consideration upstream and downstream interlinkages
- Facilitate **dialogue and trust building** among different stakeholders including, engaging policy/decision makers, implementers, media and private sector

Partnership for KDKH

Coming Together

Why do we need KDKH?

Growing Together

What did we do?

Learning Together

What did we experience?

Working together does wonders.....

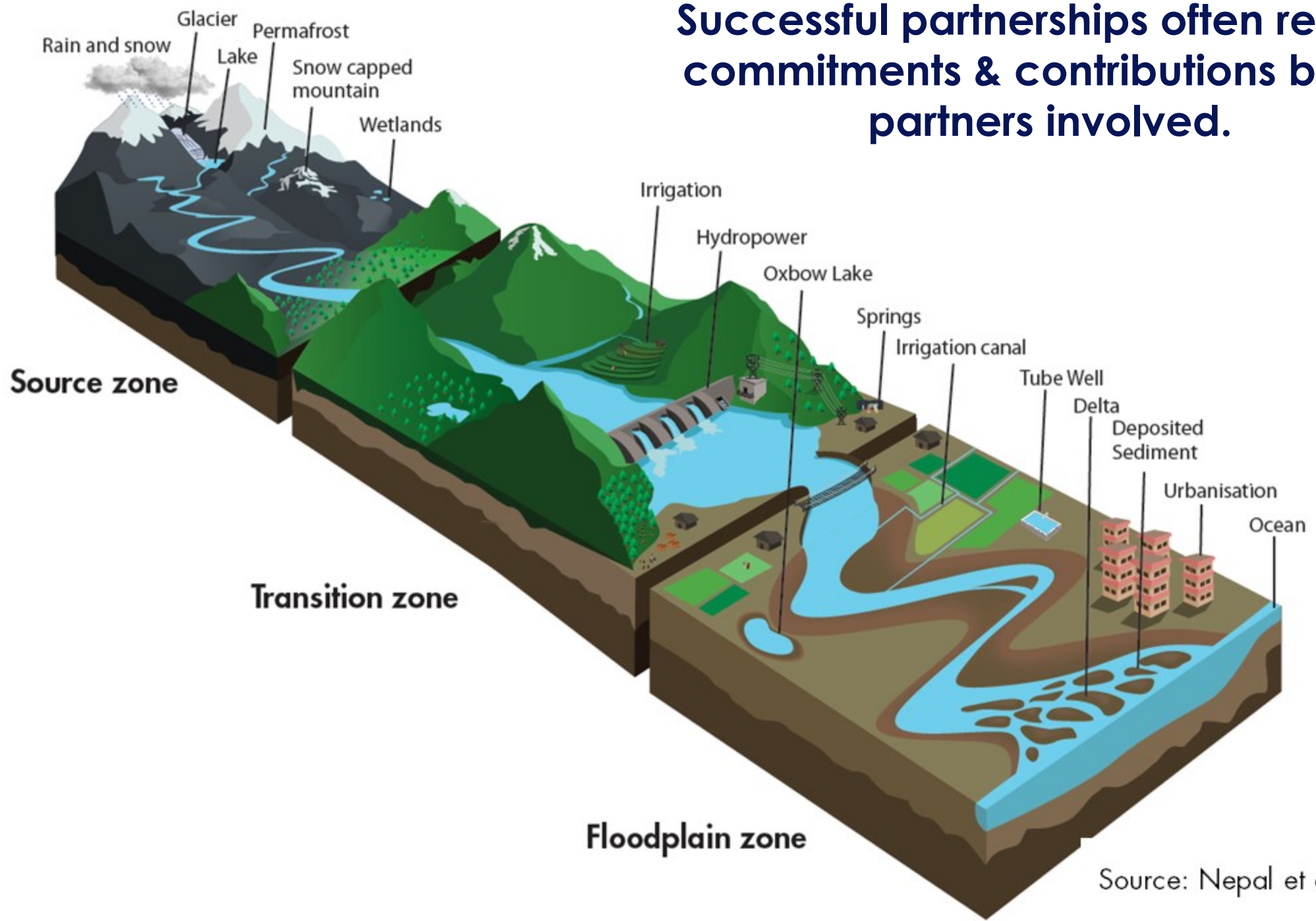
ICIMOD

CBFEWS

Working alone is not an answer.....



Successful partnerships often reflect commitments & contributions by the partners involved.



Source: Nepal et al. 2018

- A **working relationship** that aims to achieve **shared/common goals** as well as **individual objectives**
- It combines **diverse resources/skills/perspectives**
- Diversities will lead to **differences** in opinions
- Working through these differences may involve **disagreements**
- **Conflicts** in partnerships may be reframed as a **process** of **co-evolution** that can **innovate and transform**
- **Mutual accountability and commitment**, with partners is what we need..

Levels of Impacts we expect from KDKH

LEVEL 3	CHANGING POLICY & PRACTICE	In due course, even the smallest partnerships can provide the evidence and inspiration for new policies and can lead to a significant change in the 'rules'- they become transformational
LEVEL 2	INFLUENCING INDIVIDUALS, ORGANISATIONS & SYSTEMS	However, 'Level 1' projects when they work well inevitably impact and influence more widely and deeply
LEVEL 1	PRACTICAL SOLUTIONS TO CHALLENGES	Most partnerships operate at this practical level as grass roots, co-created and delivered collaborative projects

Partnership for KDKH

Coming Together

Why do we need KDKH?

Growing Together

What did we do?

Learning Together

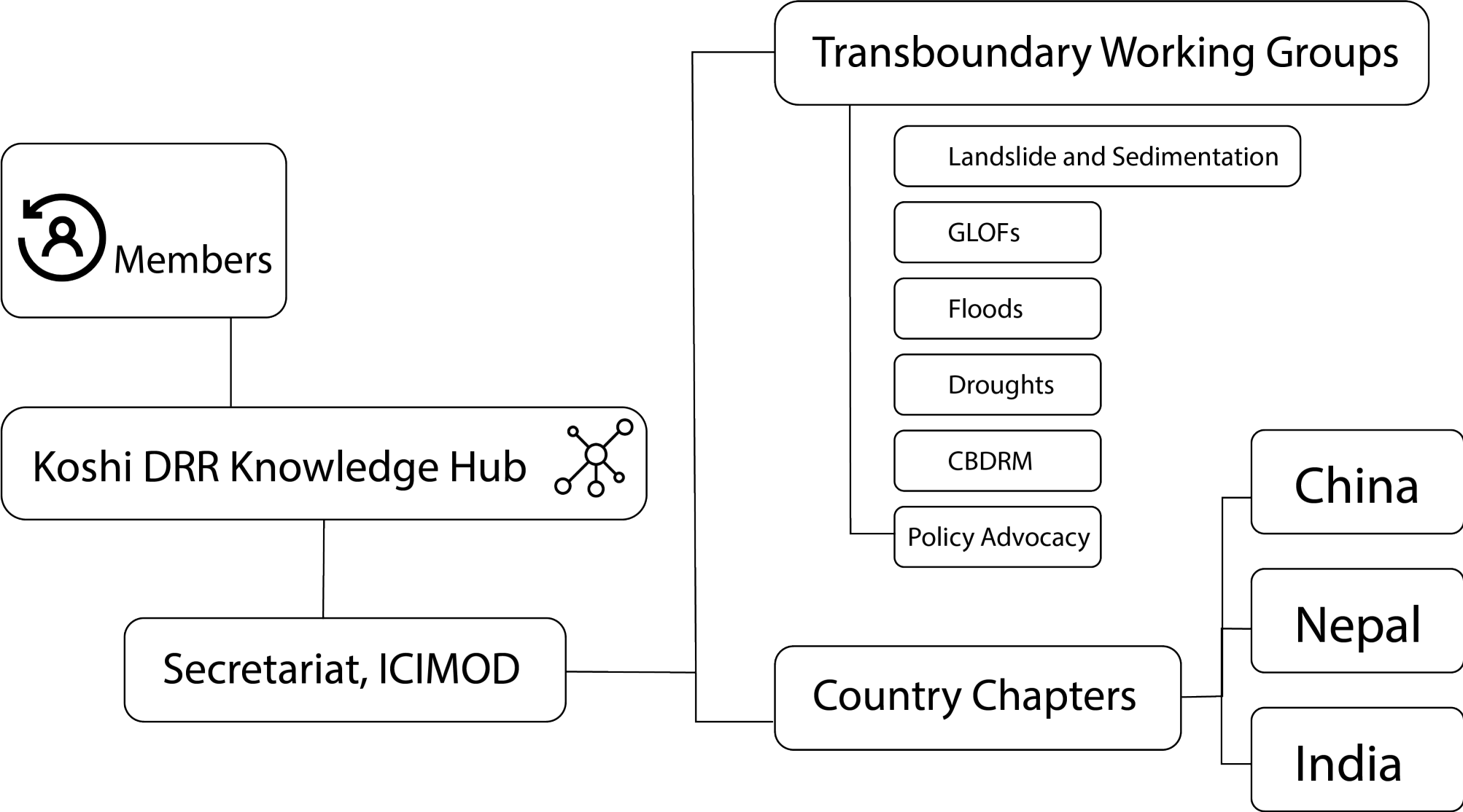
What did we experience?

Staying Together

What do we do from here?

- Use of knowledge by the policy makers
- No. of joint projects between the members of the hub
- Evidence based solutions and recommendations by the hub
- Exchange of knowledge and information
- Joint activities such as workshops, journal articles and conferences

How to take KDKH forward....



Brainstorming session

- 3 Groups
 - Government/ Policy
 - Community/ NGOs
 - Research/ Practice/ Media
- 3 Discussion point
- 15 mins each
- 5 mins presentation each group
- 15 min plenary for country chapter

- Forming of country chapter and its operational mechanism:
 - What could be the operational structure of the chapter?
 - How will country chapter function?
 - Interaction with wider KDKH network
 - Function within the country

- Possible roles of country chapter and Challenges:
 - what could be the key roles of country chapter?
 - what could be key challenges within country chapter?

- Suggestions to further improve the hub network and its transboundary impact:
 - How can we make the hub network more effective?
 - How can the country chapter play effective role in the transboundary cooperation?



THANK YOU!

SANTOSH RAJ PATHAK