



Building a resilient Koshi basin Koshi Disaster Risk Reduction (DRR) Knowledge Hub country consultation

Kanchan Shrestha, Programme Coordinator,
ICIMOD

Objectives of the workshop

Understand the issues and challenges related to Koshi basin

Share some solutions towards making Koshi Basin resilient and support transboundary collaboration

Priority actions for the Koshi DRR Knowledge Hub.



Outline of this presentation

Introduce Koshi Basin
and the Koshi DRR
Knowledge Hub

Overview of the Agenda



Koshi Basin: Transboundary basin



China

Area – 28,368 km² Population – 0.3 million (51.7% M, 48.3% F)

Decadal Growth – 10% Population Density – 5.4
5 Counties, TAR

India

Area – 19,685 km² Population – 28.3 million (52.4% M, 47.6% F)

Decadal Growth – 26% Population Density – 1275
16 districts of Bihar State

Nepal

Area – 39,407 km² Population – 10.8 million (49.6% M, 50.4% F)

Decadal Growth – 16% Population Density – 263
Province 1,2,3,
27 districts (5M,11H, 11T)

Basin

Area – 87,481 km² Population – 39.2 million Decadal Growth – 23%
Population Density – 445

Koshi Basin: Multi-hazard environment upstream/downstream linkage

79 potentially dangerous
glacial lakes in the basin

Future projections show a **14%**
increase in summer rainfall by **2050**

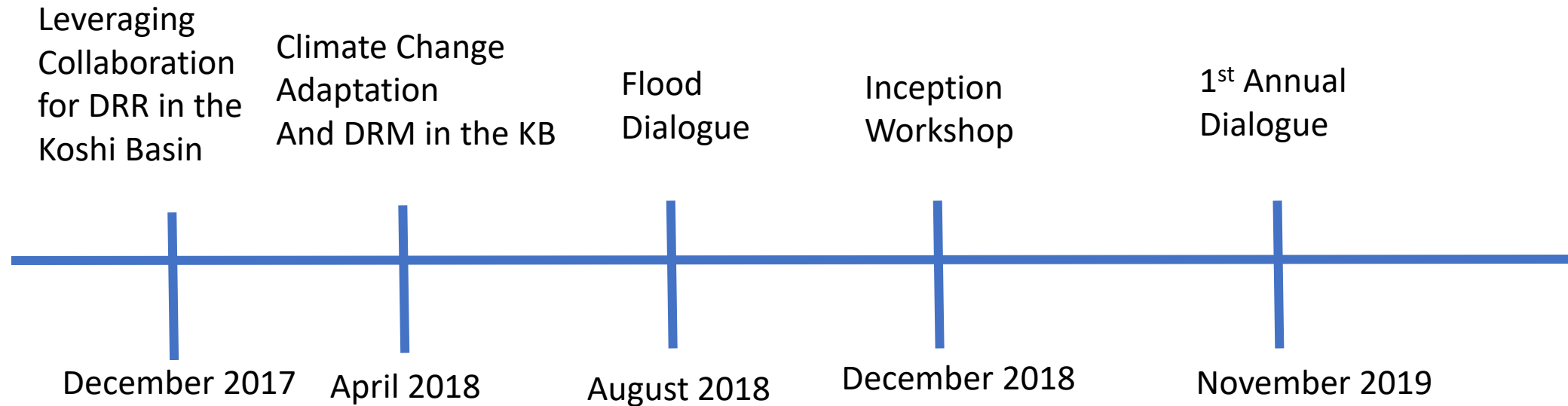
By 2050, annual water demand is
projected to rise by **44%**

About **3.9 million** people were
affected by floods each year
between 1991 and 2001

+40 million people
dependent on basin
resources



Developing the idea of the Koshi DRR Knowledge Hub

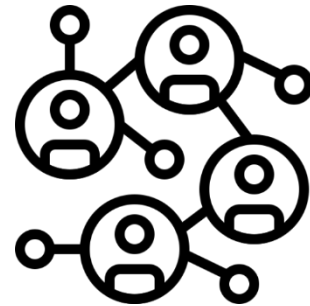


knowledge gap between and across researchers, practitioners and policy makers

Challenges in the Koshi Basin



Limited knowledge,
information sharing,
and data
generation



Lack of informed policy and
decision making; scientific and
local knowledge, and
upstream/downstream linkages
are not always considered



Trust among various
stakeholders in the basin
is a major challenge that
the participants foresee
for the knowledge hub

Opportunities in the Koshi Basin

Joint research and collaborative activities

Sharing of best practices and encouraging adoption in relevant areas

Synthesis of existing knowledge including local knowledge

Growth as a multi-stakeholder platform that links science, policy, and practice, including the private sector and local knowledge





Koshi DRR Knowledge Hub Inception Workshop

11-12 December, 2018, ICIMOD

jointly organized by Bihar State Disaster Management Authority and Sichuan University

Common Vision

Contribute to a resilient Koshi basin through better understanding and evidence-based decision making on transboundary water-related DRR

Common Vision

Contribute to a resilient Koshi basin through better understanding and evidence-based decision making on transboundary water-related DRR

Goals

Long Term

- Successful promotion of evidence-based decision making for DRR in the Koshi basin
- Establishment as a trustworthy network

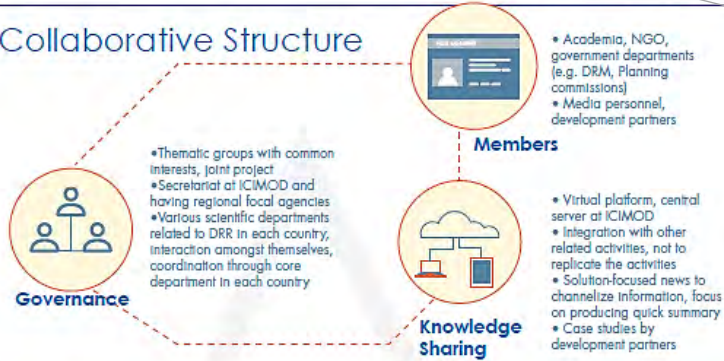
Mid Term

- Consolidate issues and recommendations
- Strengthen engagement with policy
- Develop plans for joint projects such as vulnerability assessments/risk mapping

Short Term

- Identify key issues for the hub
- Facilitate knowledge sharing
- Develop the hub's governance structure and working group
- Prioritize working area and form teams
- Prioritize low-hanging fruits such as student exchange

Collaborative Structure



Working Areas

- Floods
- Sedimentation
- Landslides
- Drought
- Glacial lake outburst floods

Cross-cutting themes

- Policy advocacy and strategy
- Community-based disaster risk management
- Environment protection
- Information and knowledge management and communication

Sustainability

- Financial resources to initiate the hub
- Joint projects funding for specific problems-allocation of funds for knowledge hub
- Report success stories, particularly from development partners
- Resources for converting science to communication (local language)
- Regular meetings and workshop, follow ups, discussion meetings

Scope of the hub

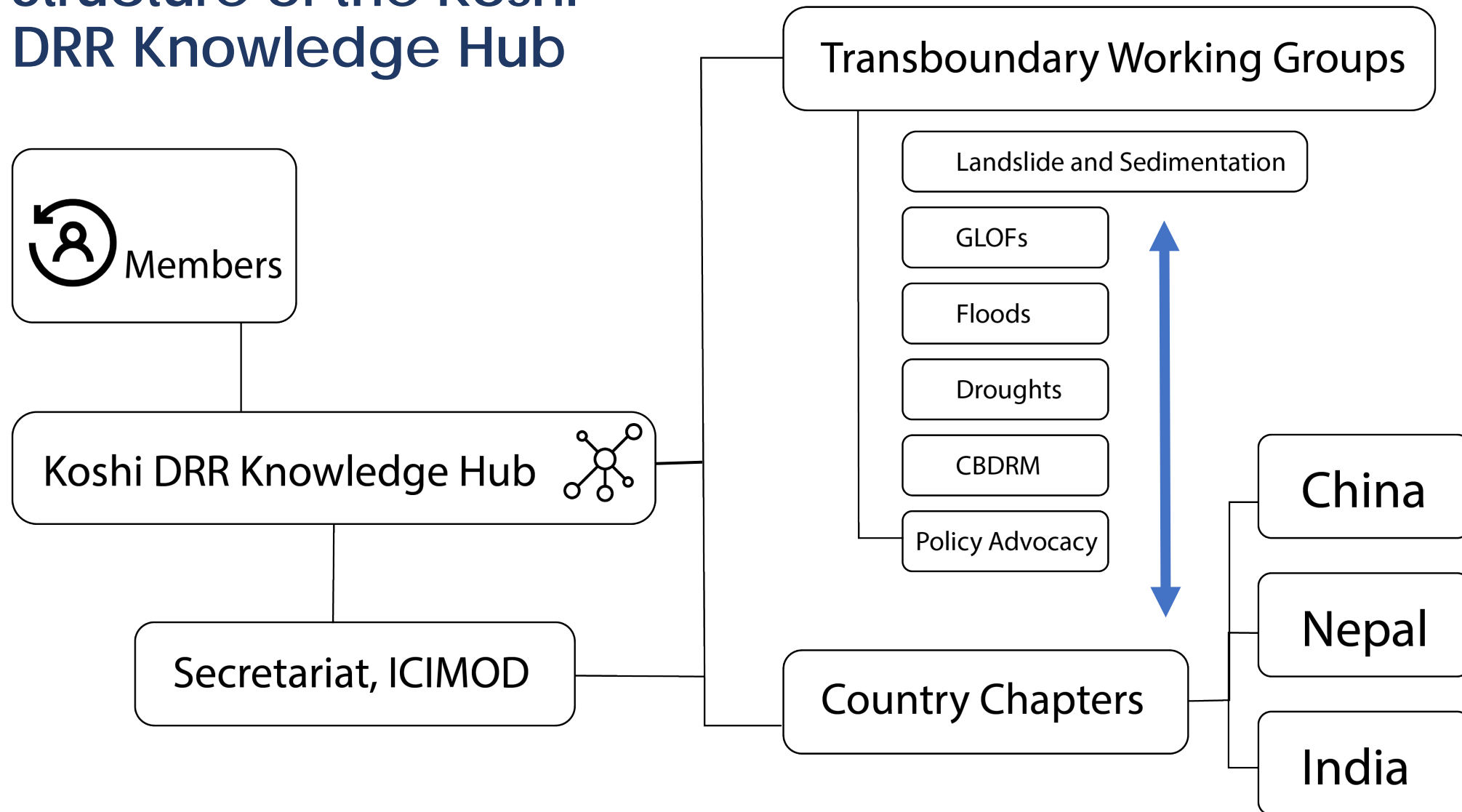
- Promote transboundary collaboration
- Strengthen the science-policy-practice
- Synthesize and provide recommendations for policy advocacy
- Trust building

Success indicators

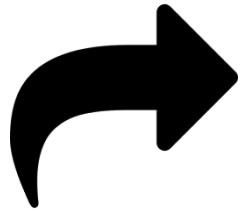
- Use of knowledge by policy makers
- Initiation of a number of joint projects among hub members
- Production of evidence-based solutions and recommendations by the hub
- Exchange of knowledge and information
- Joint activities such as workshops and conferences



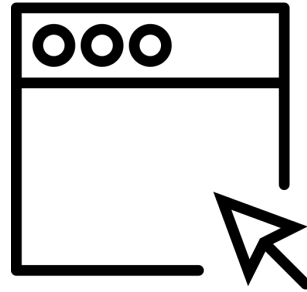
Structure of the Koshi DRR Knowledge Hub



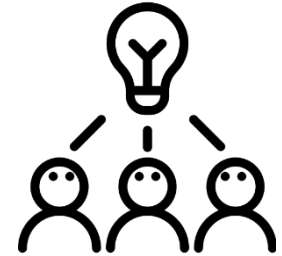
Opportunities for members of the KDKH



Opportunity to share and learn from other members.

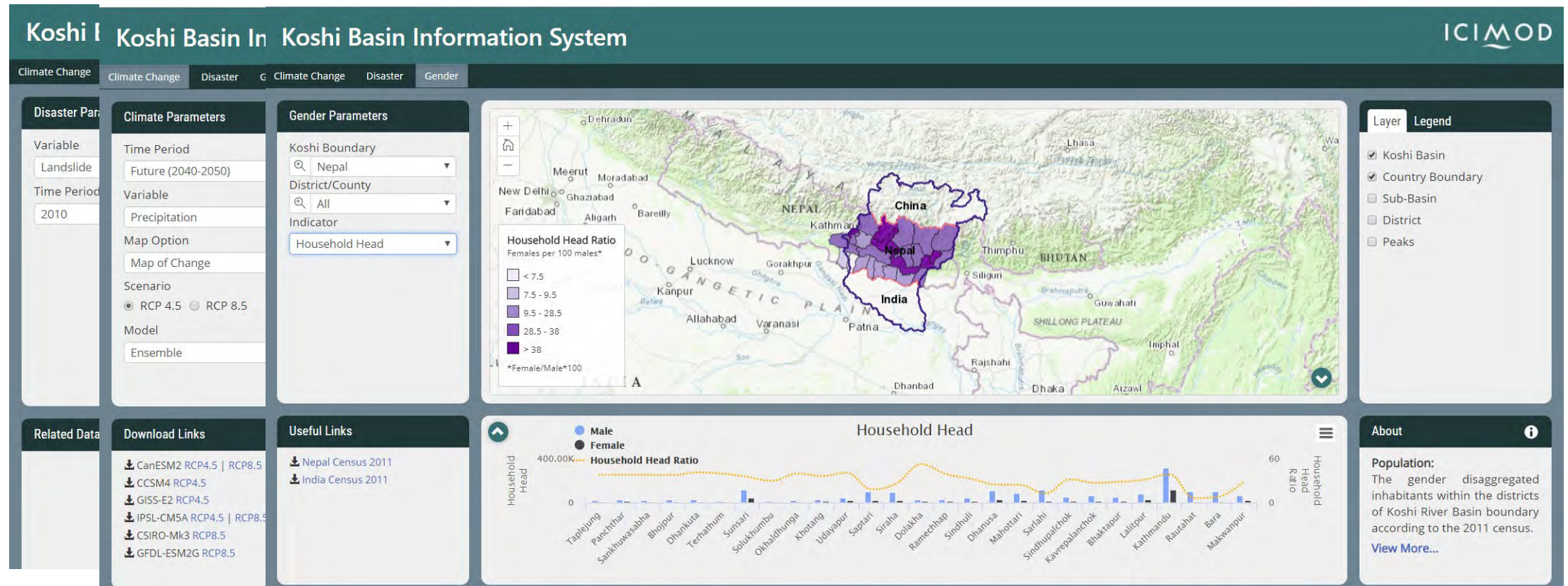


Contribute to an online platform

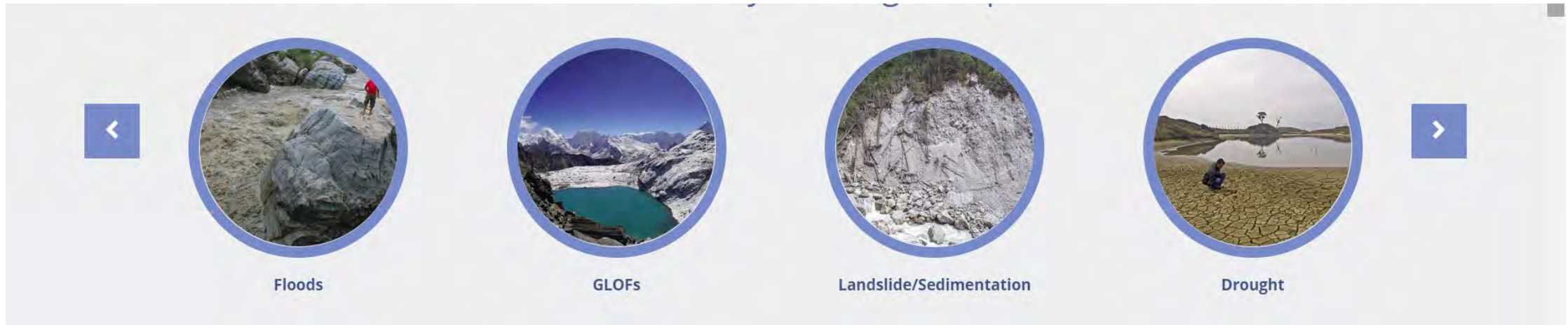


Collaborate with a wide range of stakeholders by being a part of the Transboundary Working Groups (TWGs)

Koshi Basin Information System



Online platform: www.icimod.org/kdkh



Proposed roles of Country Chapters

bringing country perspectives and priorities to the KDKH and engage with key stakeholders for science-policy-practice interlinkage and transboundary collaboration



Where can we deepen collaboration?

- Science-Policy-Practice -> joint policy dialogues
- Data and information sharing
- Standardization of methods
- Knowledge and technology transfers
- Institutional capacity building
- Joint action research (complementary, synergistic)

Outline of the agenda for the country consultation

Day 1:

- **Technical Session I** : Understanding the issues and challenges of the Koshi river basin
- **Technical Session II**: Strengthening coordination and collaboration among Transboundary development agencies
- **Technical Session III**: Improving upstream-downstream cooperation for cross-border floods and resilience building

Outline of the agenda for the country consultation

Day 2:

- **Technical Session IV** : Transboundary interactions and sustainable actions towards a resilient Koshi
- **Technical Session IV**: Role of media in reaching out to the unreached in creating a resilient Koshi river basin
- **Koshi DRR Knowledge Hub (KDKH) – country chapters and transboundary working groups (working tea)**

What we seek from the participants

Inputs for:

- Issues for the country chapter
- the working mechanism for the country chapter
- Strengthening transboundary working groups
- Suggestions to improve the Koshi DRR Knowledge Hub

www.icimod.org/kdkh



Thank you

Kanchan.shrestha@icimod.org