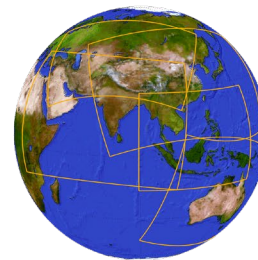
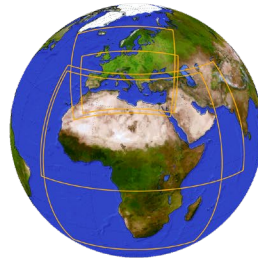
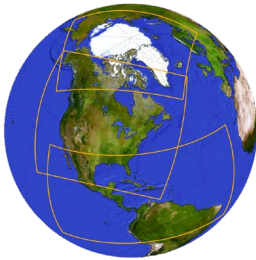


Update on CORDEX activities



www.cordex.org

WCRP
CORDEX

Online October 12

Restructuring of the WCRP

Joint Scientific Committee

WCRP Secretariat

Lighthouse Activities

Major experiments, high visibility projects, infrastructure building blocks
Ambitious and exciting

Ongoing and additional activities and fora

Fixed-term Projects

Conferences and Workshops

Reference Datasets, Evaluations and Benchmarking

Diversity- and Capacity-building: ECRs, Regions

Rapid Updates, Syntheses Assessments, Gap Analyses

Communications and Outreach

International Offices

WCRP Communities

Enduring Capabilities, Homes for Expertise

- *Climate and Cryosphere*
- *Climate and Ocean Variability, Predictability and Change*
- *Global Energy and Water Exchanges*
- *Stratosphere-troposphere Processes And their Role in Climate*
- *Earth System Modelling and Observational Capabilities (new)*
- *Regional Climate Information for Societies (new)*

Lighthouse Activities

Earth System Change
 My Climate Risk
 Safe landing climates
 WCRP Academy
 Digital earths

Yellow columns: homes

Discussion of where
 CORDEX fits in this new
 structure

New structure - homes and pillars: <https://www.wcrp-climate.org/wcrp-ip-structure>

❖ CORDEX White Paper (was open for comments)

Future challenges for CORDEX?

- Need for higher resolution simulations but possibly on smaller domains
- Need for increased model complexity (regional Earth System Models)
- Exascale computing
- Data and infrastructure
 - ❖ Ensure all CORDEX data is available on ESGF
 - ❖ Increased need for sub-daily data

❖ Coming: How to bridge climate science to society

CORDEX update

- ❖ **CORDEX experiment design for dynamical downscaling of CMIP6**
 - ❑ Nearly finalized
- ❖ **Coming: Empirical Statistical Downscaling**
- ❖ **Flagship Pilot Studies**
 - ❑ Regional Climate features, CP-scale
 - ❑ End-to-end perspective
 - ❑ 9 endorsed, 7 new applications
- ❖ **Open meetings for POCs and FPS PIs**



CORDEX simulation overview

❖ Existing simulations ; domain, RCM, forcing etc

☐ South Asia

https://docs.google.com/document/d/1XQ2h5Mpfjpn-fUDLJohD1xiL9JDUAuxn_xYsSFzwzWw/edit

	Domain	GCM_run	RCM	Evaluation	Historical	RCP2.6	RCP4.5	RCP6.0	RCP8.5	Reference (DOI)	Institution	Contact Info. (*)	Access	License
1	WAS-22	ECMWF-ERAINT	COSMO-crCLIM -v1-1_v1	1979-2015	N/A	N/A	N/A	N/A	N/A	10.1002/2016JD026013	CLMcom-ETH	(1) S.L. Sørland (silje.soerland@nev.ethz.ch) and P. Kumar (pothapakula@iau.uni-frankfurt.de)	ESGF	unrestricted
2	WAS-22	ICHEC-EC-EARTH_r12i1p1	COSMO-crCLIM -v1-1_v1	N/A	1950-2005	N/A	N/A	N/A	2006-2099	10.1002/2016JD026013	CLMcom-ETH	(1)	ESGF	unrestricted
3	WAS-22	MPI-M-MPI-ESM-LR_r1i1p1	COSMO-crCLIM -v1-1_v1	N/A	1950-2005	2006-2099	N/A	N/A	2006-2099	10.1002/2016JD026013	CLMcom-ETH	(1)	ESGF	unrestricted

CORDEX update

- ❖ **Best practices for workshops**
- ❖ **Platforms for communication**
- ❖ **Data sharing**
- ❖ **Training guides/templates, tutorials**

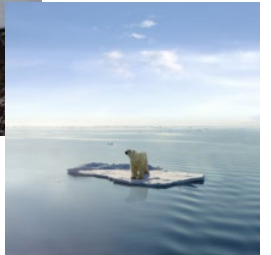


Improve communication/cooperation Users-Producers

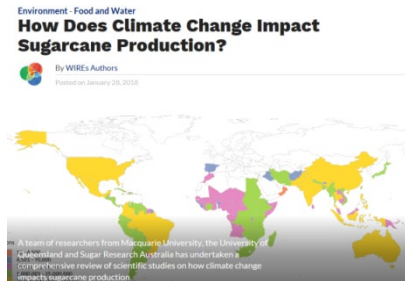
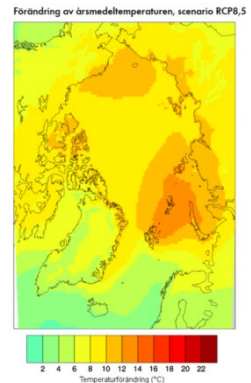
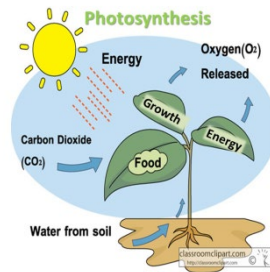
Adequate climate information communicated in an understandable and usable way to; decision makers/responsible for VIA measures

- **Water managers south of Sahara**
- **City planners in Manila**
- **Forest owners in Sweden**
- **Farmers in India**

Co-produce
 Co-explore
 Co-design
 Co-define
 Co-refine



<http://khandingenglishproject.blogspot.se/2012/12/discussion-text.html>



CORDEX update

Thank you!!