



**UPPER INDUS BASIN NETWORK  
TECHNICAL WORKING GROUPS MEETING  
21 NOVEMBER 2014**

**CRYOSPHERE  
MONITORING AND  
MODELING**

***(MUHAMMAD ATIF WAZIR)***

***METEOROLOGIST***

***PAKISTAN METEOROLOGICAL DEPARTMENT***

# Outline

- A. Selection of Suitable Catchment and Glacier
- B. Hydro-Met Installation and Field Experimentation.
- C. Modeling for the Whole UIB
- D. Recommendations to the Policy Makers

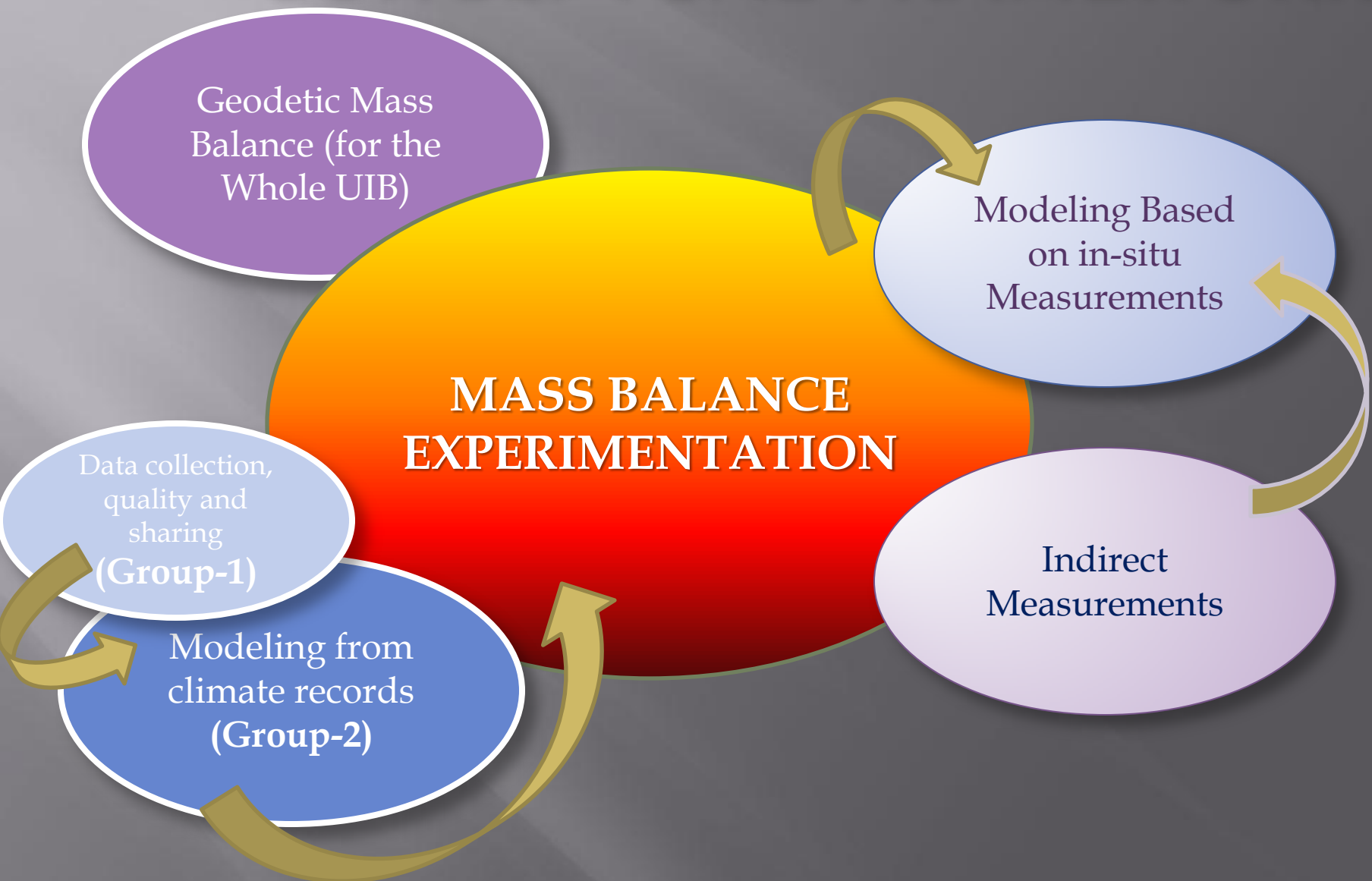
# Approches

- A. Contribution of Snow melt, Precipitation and Glacier melt to runoff.
- B. Vertical and Horizontal Gradient .
- C. Study Glacier Dynamics.

# Experimentation

- A. Ablation Measurement (Stakes)
- B. Accumulation Measurements
- C. Hydro-Met Installation on Classified Glaciers
- D. Conducting other Indirect Experimentation
- E. Geodetic Measurements

# CONCEPTUAL FRAMEWORK



420'000

450'000

480'000

510'000

540'000

570'000

600'000

# Proposed Catchment

## Legend

— river network

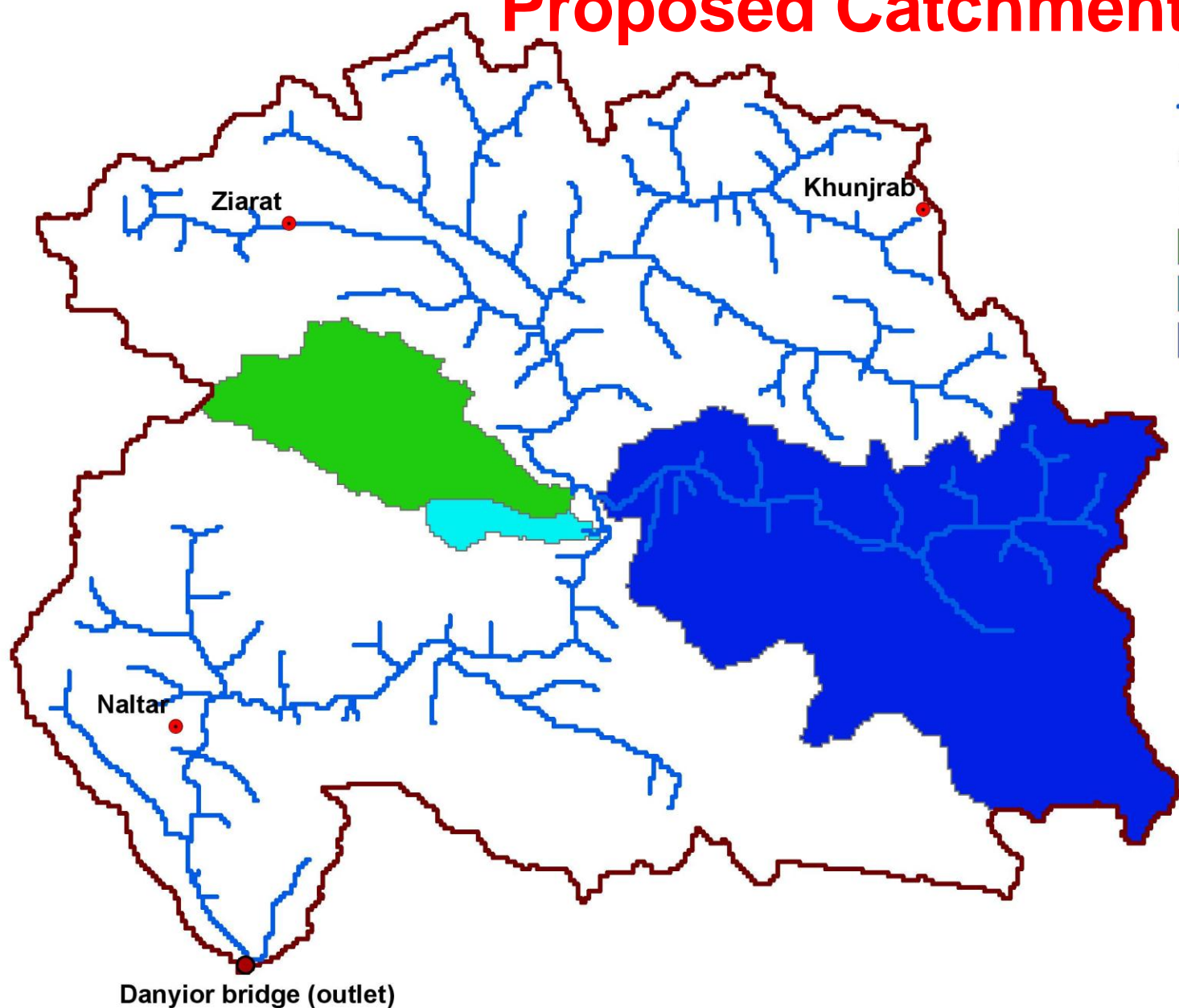
## subbasins\_hunza

### Name

Batura (670 km<sup>2</sup>)

Passu (98 km<sup>2</sup>)

Shamshal (2760 km<sup>2</sup>)



# To be Specific!

- ▣ Hazard management
- ▣ Sea level rise
- ▣ Climate studies
- ▣ Management of regional water supplies

