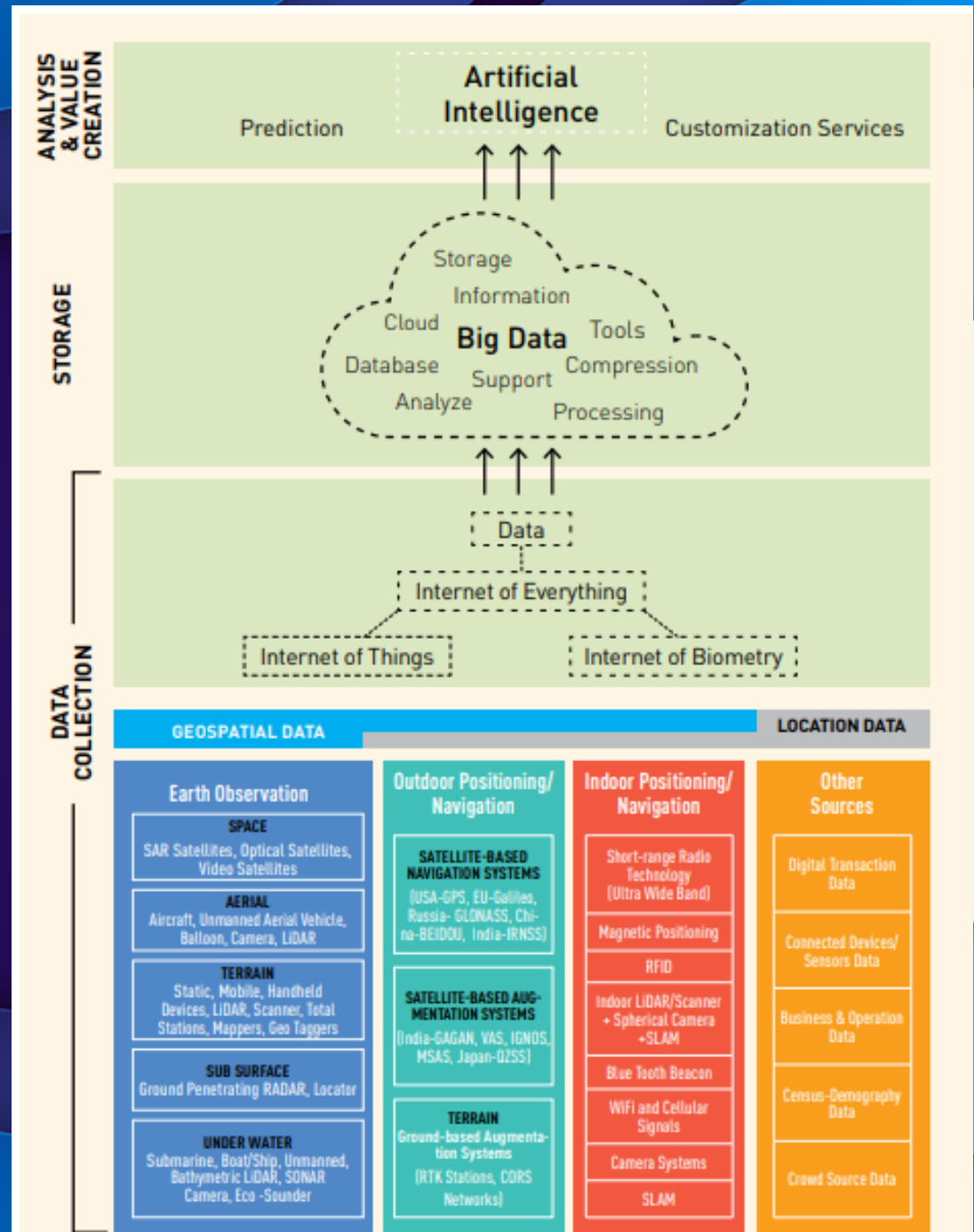


Geospatial Knowledge Infrastructure: Empowering Next- Generation Digital Economy

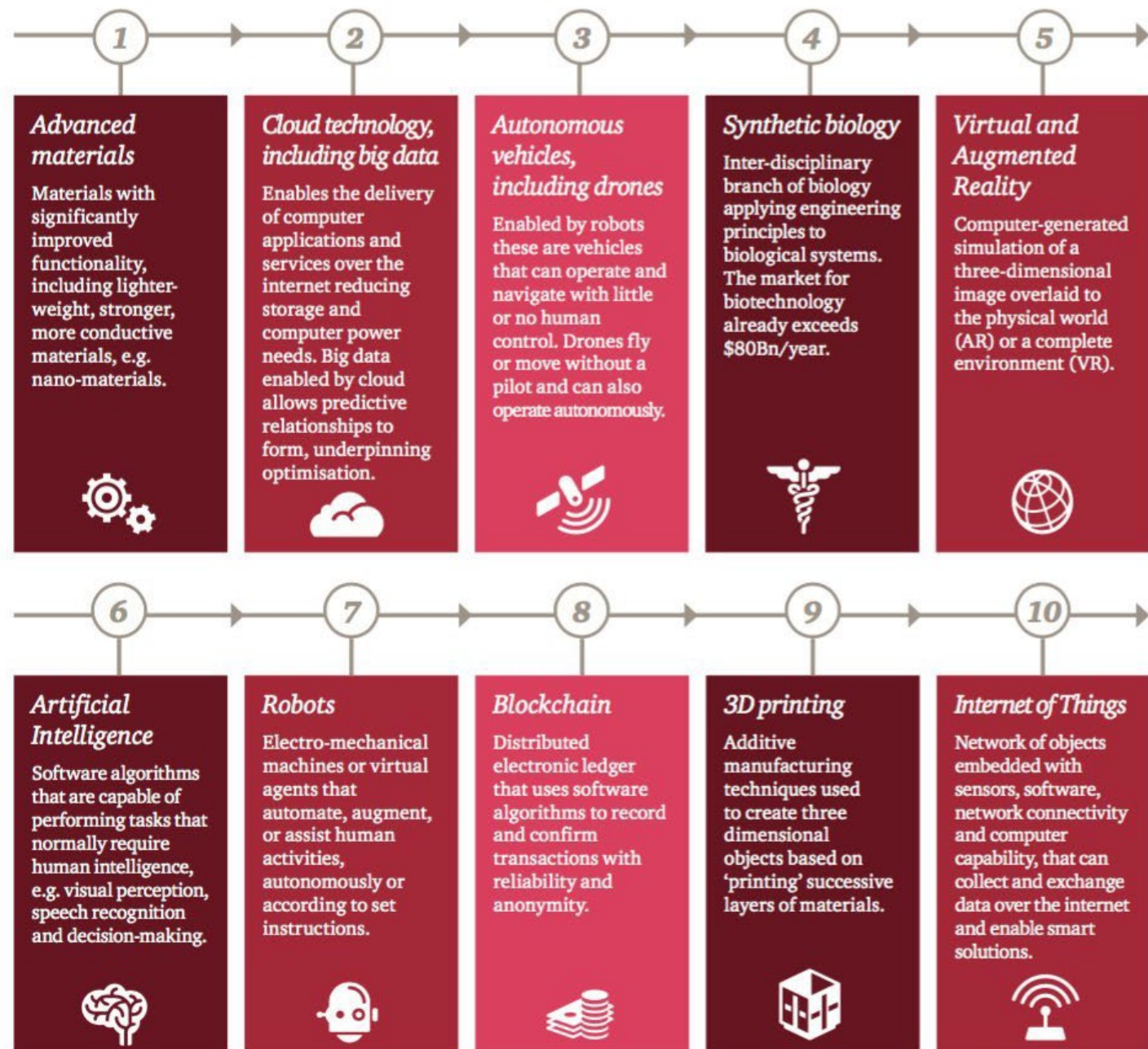
Anamika Das
Vice President – Geospatial Knowledge Infrastructure
Geospatial Media and Communications

Geospatial data: fuel to data economy

- Data-driven innovation is a key enabler of growth and jobs
- Data is also recognized as the most critical asset for advancing new technologies such as Artificial Intelligence and the Internet of Things.



4IR creating new opportunities in geospatial industry



Source: PwC analysis

source pwc via @mikequindazzi

The world is changing so a new vision

4IR is driving new behaviours, collaborations and policies

4IR value lies in innovation, knowledge & disruption.

Use of digital transformation, technology and data to meet 'a deeper, faster and more ambitious response' to intensifying Global challenges.

Users are looking for, and expecting increasingly immersive and on-demand answers, services and experiences

Foundation geospatial information through real-time positioning, sensors, connectivity and automated processing

Companies are already delivering geospatial knowledge

Geospatial Knowledge Infrastructure (GKI)

Provides the critical geospatial component to knowledge and automation. It integrates geospatial concepts, technologies and information with societal and technological change as part of the much wider digital ecosystem.

Geospatial Dimension to the Data Ecosystem

- Value Measurement
- Transparency
- Open Positioning Infrastructure
- Semantic Web
- Linked Data
- Real-Time Processing
- Integrated Standards

Industry Ecosystem

- Data Economy
- Investment
- Innovation, Research and Development
- Diversity and Professional Development
- Global Village

Foundation Data Infrastructure

- Global Geodetic Reference Framework
- Automated data processing and sharing
- Continuously Maintained Fundamental Geospatial Information
- Earth Observation and Ocean Survey
- Allied Information Enterprise
- Digital Twin
- Real-time data integration
- Knowledge Services

Partnerships and Collaborations

- Knowledge Stakeholders
- Geospatial Knowledge Co-creation
- Government Industry Partnerships
- Citizen Partnership
- Collaborative Innovation

Integrated Policy Framework

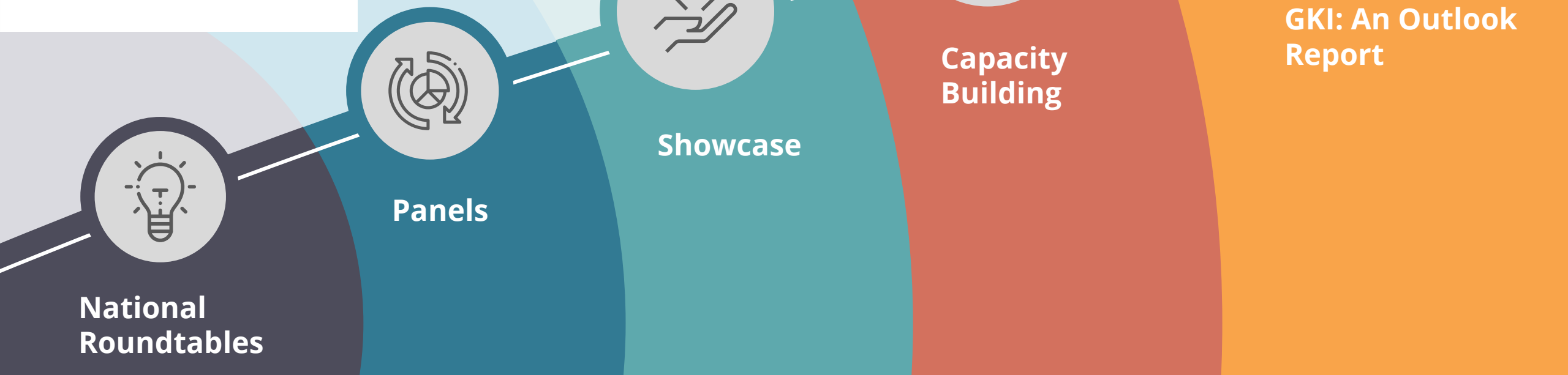
- Government Role
- Aligned Governance
- Integrated Core Geospatial Policies
- Government Policy Alignment
- Global Policy Alignment
- Open Data
- Data and analytical ethics and law
- Digital Education

Applications, Analytics and Modelling

- User Applications
- Predictive Analytics, Modelling and Simulation
- Knowledge Representation

United Nations Integrated Geospatial Information Framework





Jointly Organized by

Strategic Partners

Thank you...

8 **More details on:**
<https://geospatialmedia.net/gki-campaign.html>