

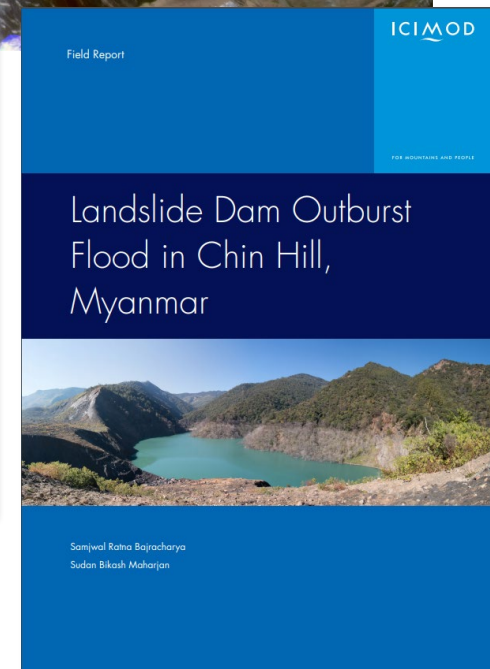
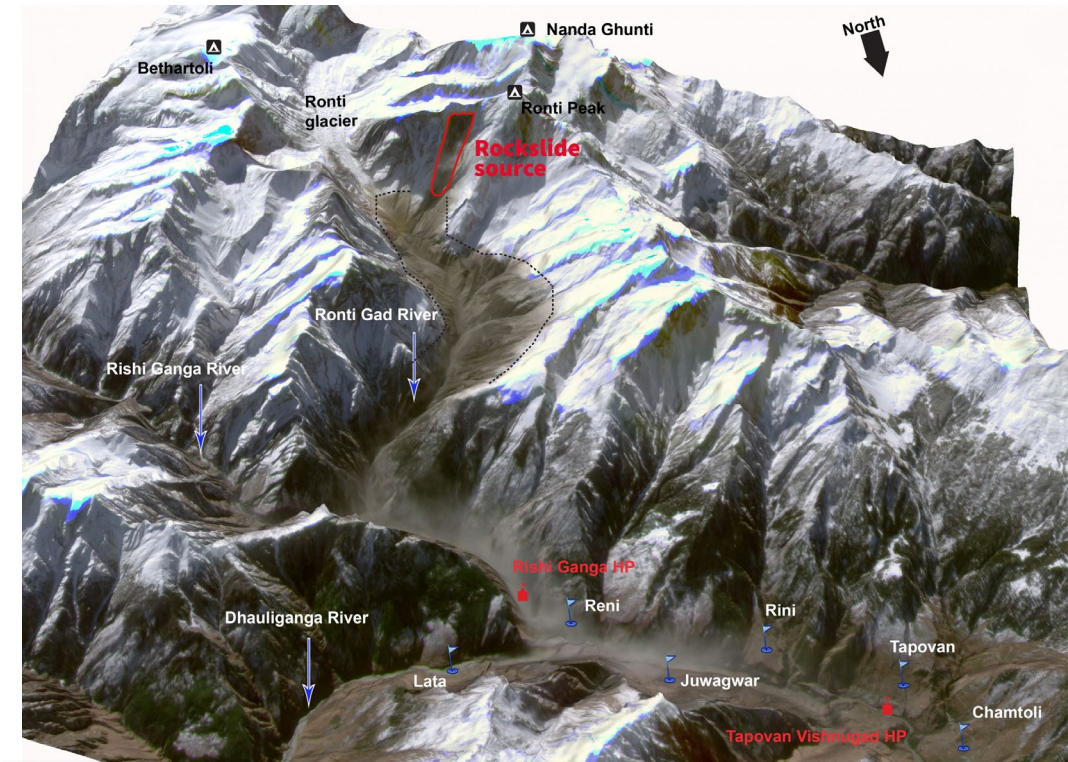
Birendra Bajracharya
6 August 2021

SERVIR applications for disaster in the HKH

ICIMOD's response to Disaster in HKH

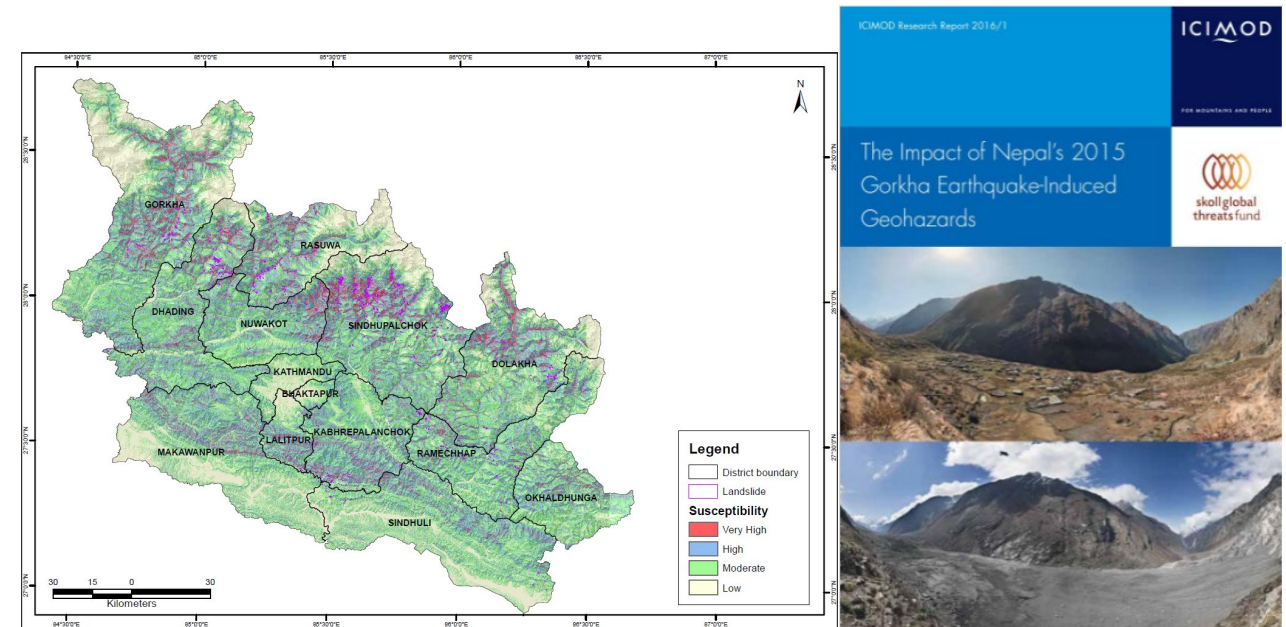
- Melamchi flood study
- Chamoli flash flood Feb 2021
- GLOF in Panjshir valley, Afghanistan, 2018
- Landslides induced by heavy rain at CHT, Bangladesh, 2017
- Landslide dam in Chin Hill, Myanmar, 2016
- Gorkha earthquake 2015
- Jure landslide 2014
- Seti flash flood 2012
- Attabad landslide dam, Pakistan, 2010
- Kashmir earthquake 2005

Recently formed a Disaster Task Force for more coordinated efforts in rapid response



Gorkha Earthquake 2015

- Portal of data and information sharing
- Landslide inventory and identifying landslide dam
- Landslide susceptibility maps and monitoring risk area
- Disaster information management system



SERVIR 

SERVIR-HKH



SERVIR Hindu Kush Himalaya

Partnership between USAID, NASA and regional centers to strengthen regional and national capacity and commitment for long-term sustainability of services that use EO and Earth Science and are tailored to the needs of decision-makers.

Major focus:

- Build capacity of people and institutions to integrate EO science and technology
- Science and technology innovations/advances to solve development challenges
- Foster strategic collaborations across scales and sectors to achieve sustainable solutions



Agriculture and Food
Security



LULC and Ecosystems



Water and hydroclimatic
disasters



Weather and Climate



Air Quality

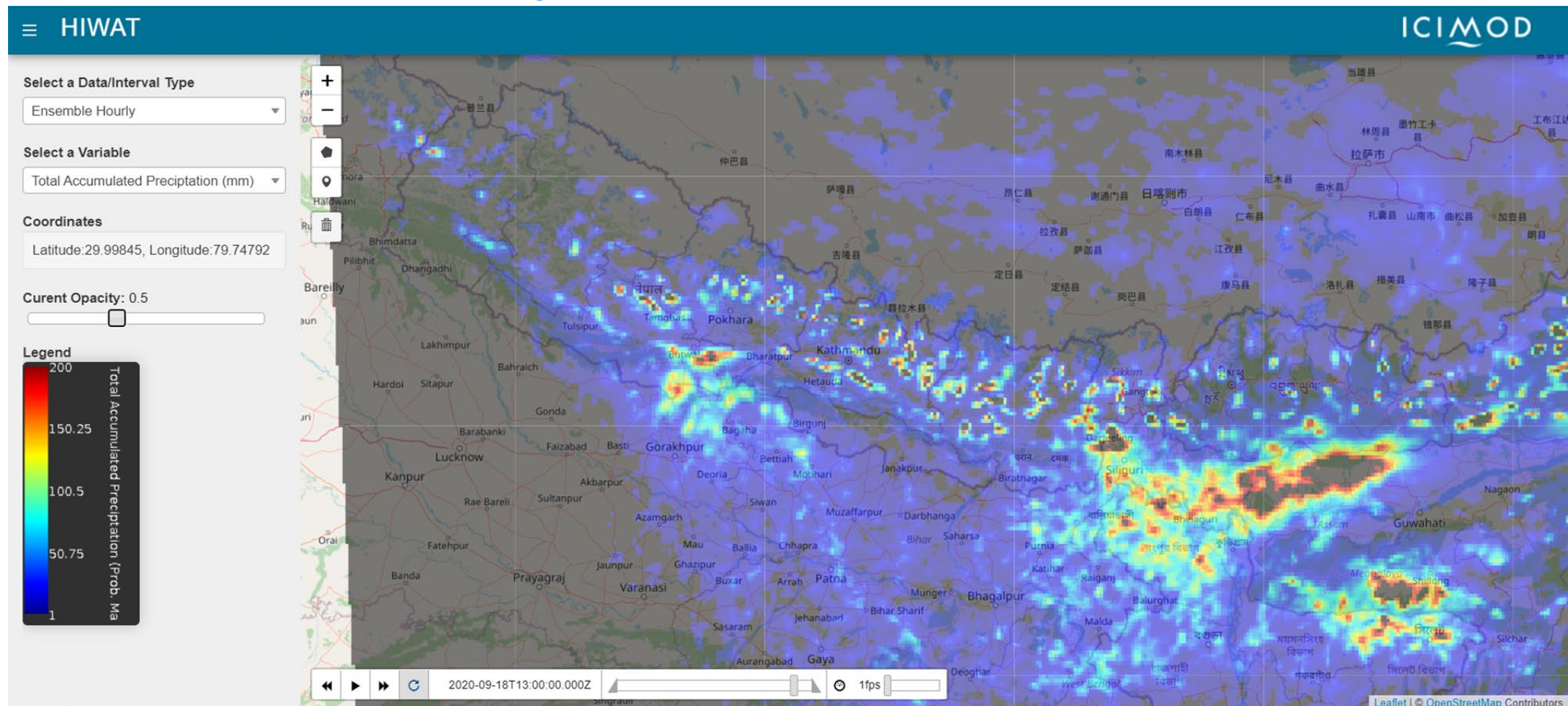
Thematic Priorities

High Impact Weather Assessment Tool (HIWAT)



* Available only during pre-monsoon and monsoon season (March-September)

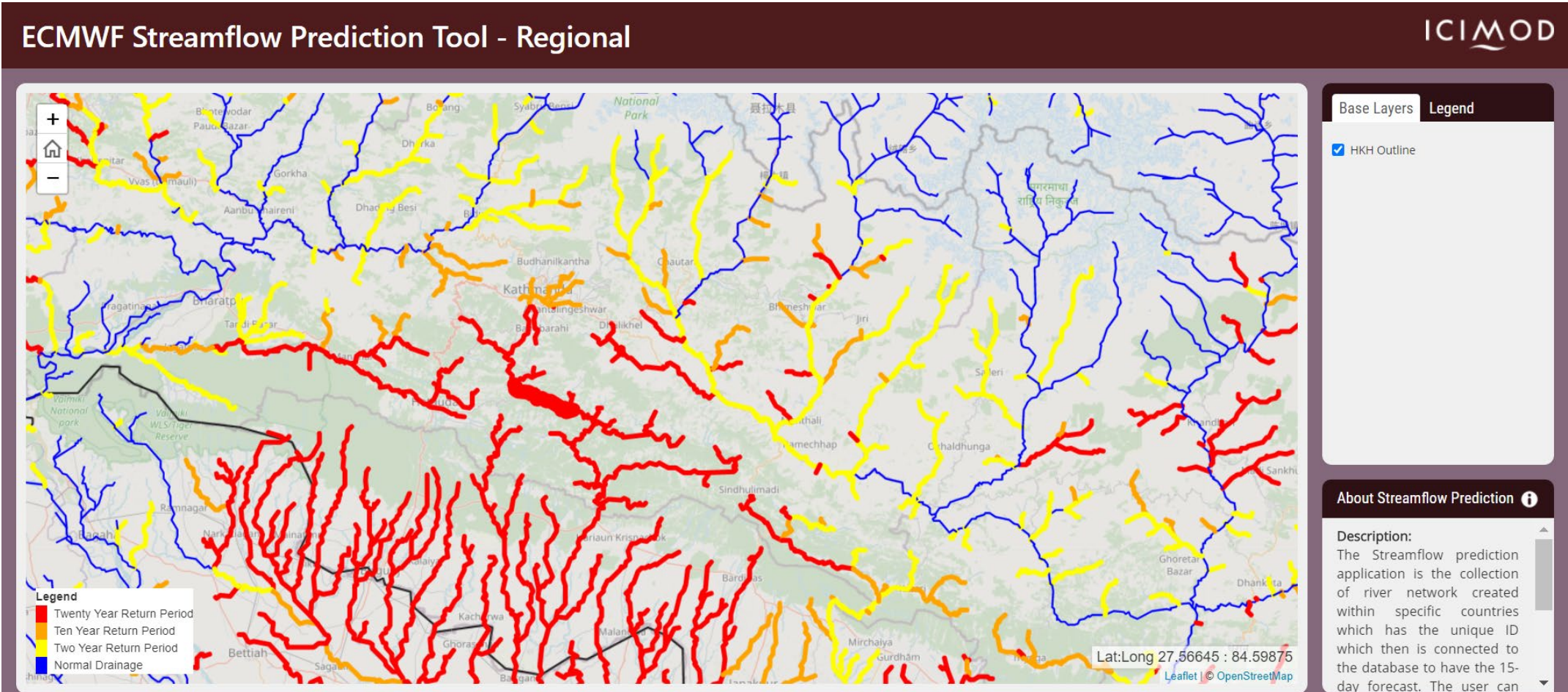
<http://tethys.icimod.org/apps/hiwat>



Enhancing Flood EWS: Stream flow forecasting, flash flood early warning



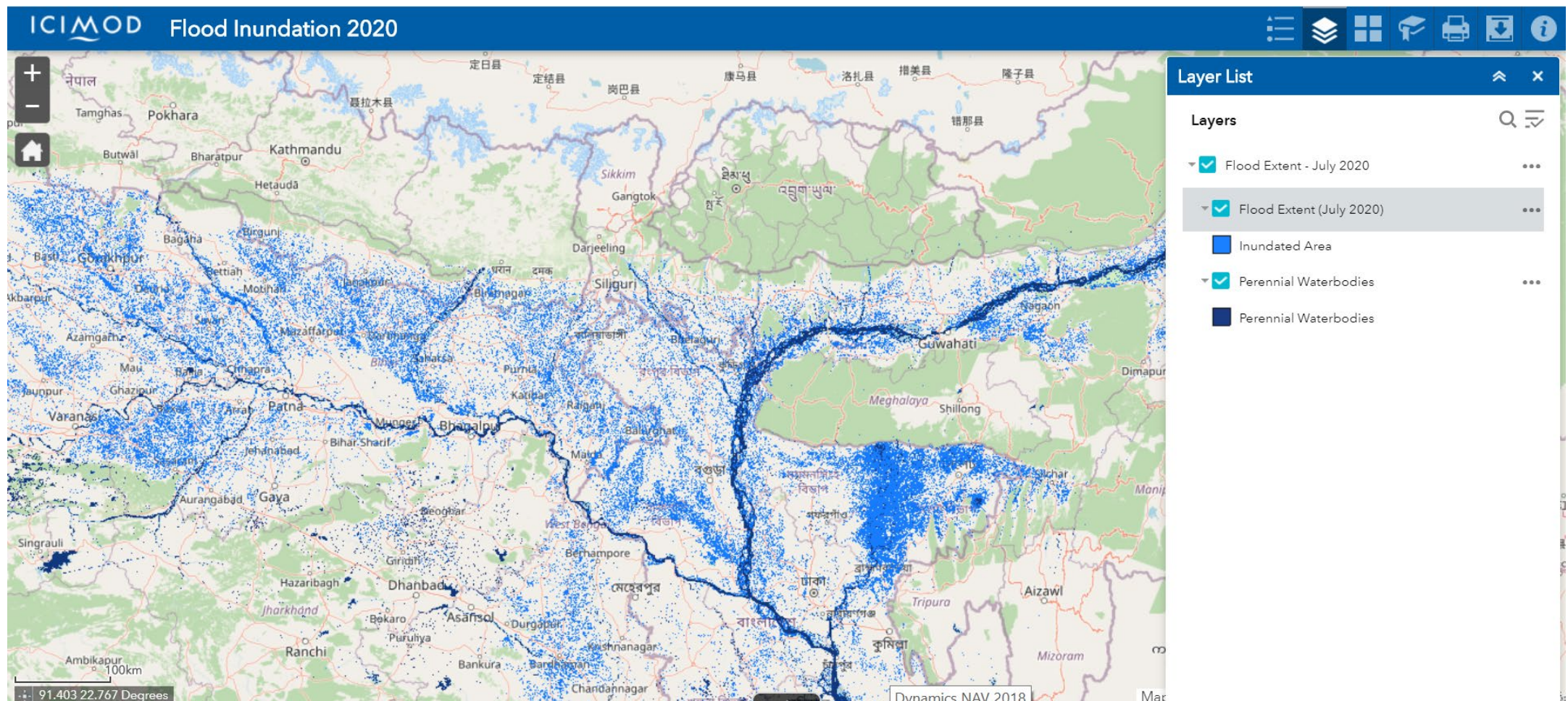
<http://tethys.icimod.org/apps/streamflownepal>



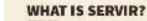
Inundation mapping and forecasting, damage and impact assessment



<http://geoapps.icimod.org/Flood2020/>



CONNECTING SPACE TO VILLAGE



SERVIR HINDU KUSH HIMALAYA

WEATHER AND CLIMATE SERVICES



Working closely with partner institutions, SERVIR-HKH is implementing the High Impact Weather Assessment Toolkit (HIWAT) to monitor extreme weather-based events in the Hindu Kush Himalaya.

WATER RESOURCES AND HYDRO-CLIMATIC DISASTERS



SERVIR-HKH is working on enhancing flood early warning information for flood-prone rivers in Bangladesh and Nepal, and strengthening ICIMOD's regional flood outlook.

INTEGRATING GENDER AND YOUTH

SERVIR-HKH supports the integration of gender concerns in its design and implementation as well as in the monitoring and evaluation processes across its services. Through university-level exchanges, internships, and hackathons, the Initiative engages young people in geospatial science applications.



 @icimoc

SERVIR network

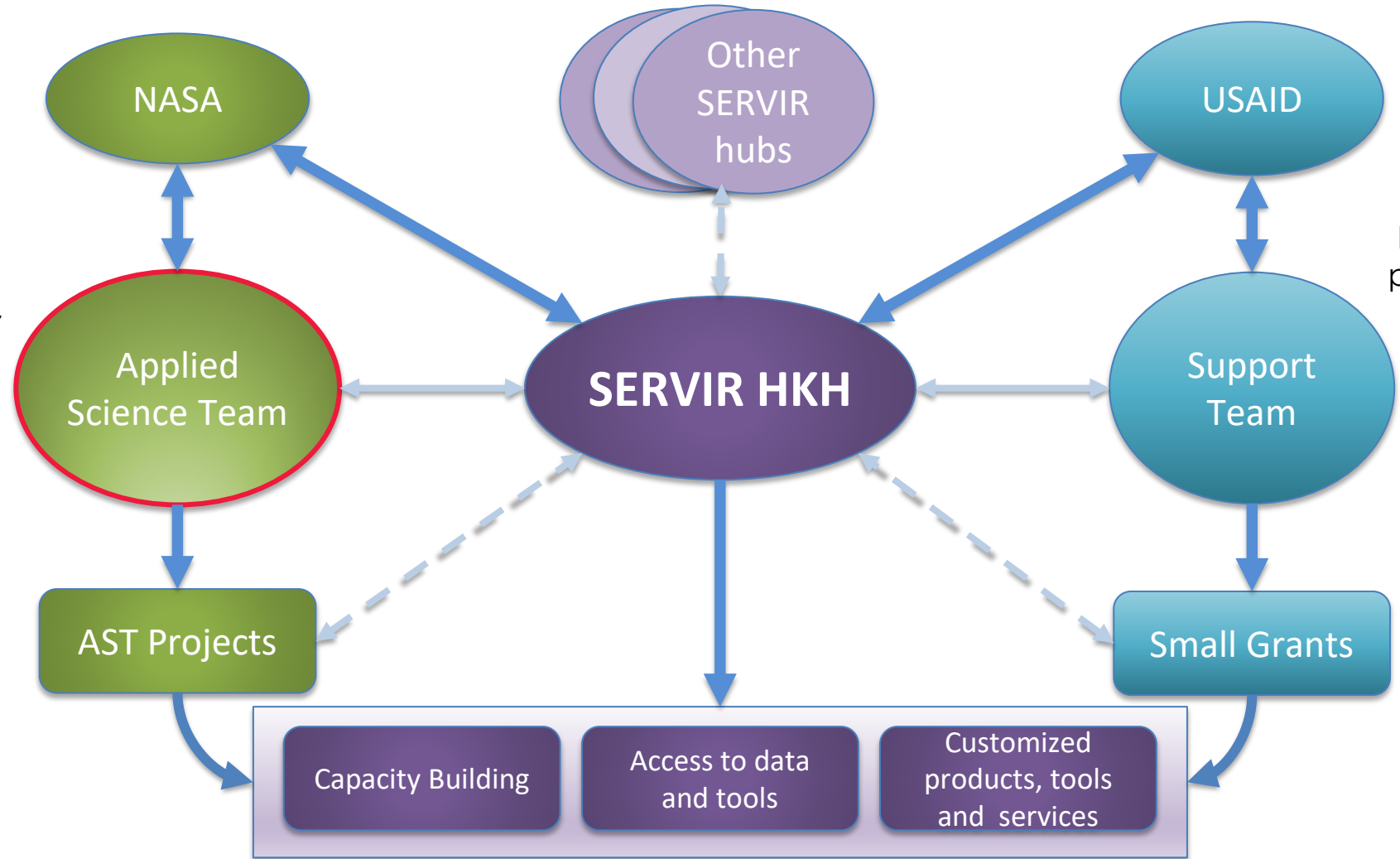
Technical backstopping,
connect to scientific
communities, access to data
and methods

Exchange technical knowledge,
joint product development

Leverage global development
mandate; coordinate among
its bilateral and regional
missions

Joint research,
product co-
development,
training

Develop tools and
provide training on
hub functions,
facilitate hub
exchange,
maintain global
web site



Consultation

- Needs assessment – across the scale and geography
- Possible solutions - Technologies and institutional
- Major stakeholders and ongoing efforts
- Potential collaborations to build synergies