



IMPACTS OF CLIMATE CHANGE IN THE PAMIR MOUNTAINS

Ilhomjon Rajabov

*Climate Change Centre & PPCR Secretariat
Republic of Tajikistan*



93%
TERRITORY IS
MOUNTAINS
(PAMIRS,
HISSAR-ALLAY
AND TIAN-
SHAN)

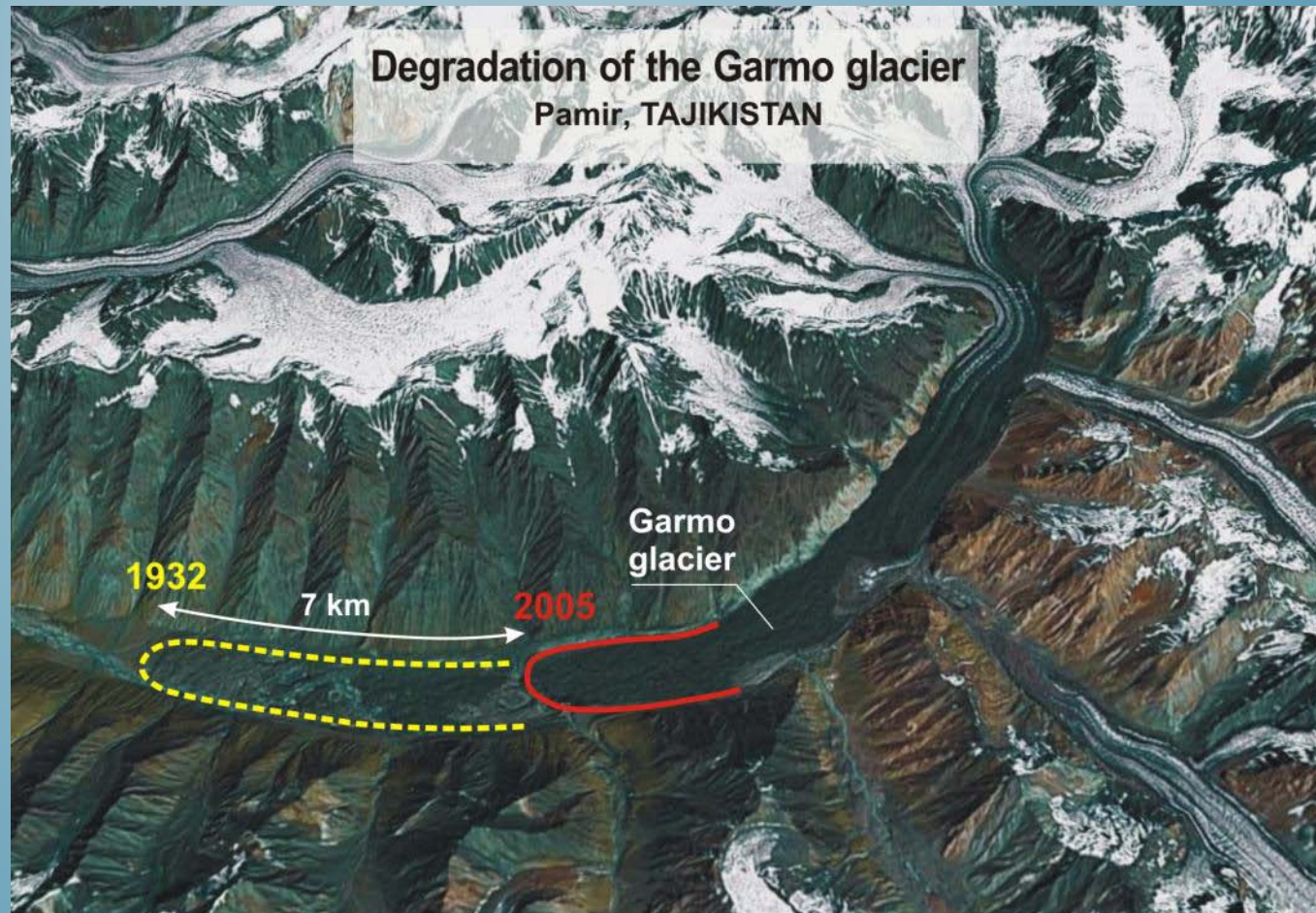
6% OF
TERRITORY
COVERED BY
GLACIERS





GARMO GLACIER

RETREATED
MORE THAN 7
KM SINCE
1932 - THE
MOST
SIGNIFICANT
RETREAT IN
CENTRAL
ASIA



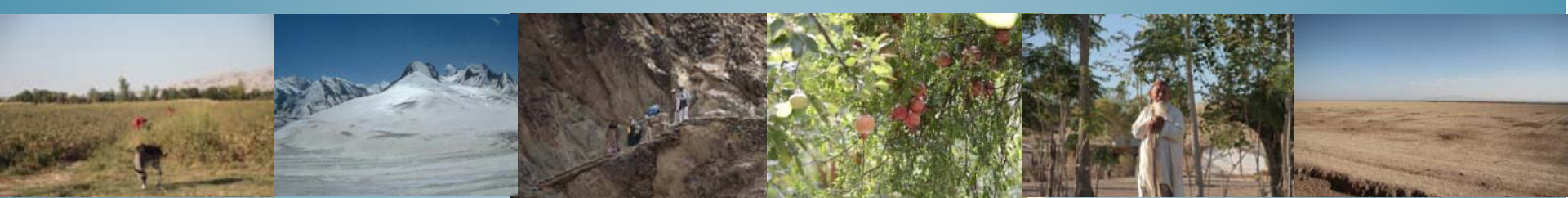
Source: Tajik Agency on Hydrometeorology

Image: Google Earth

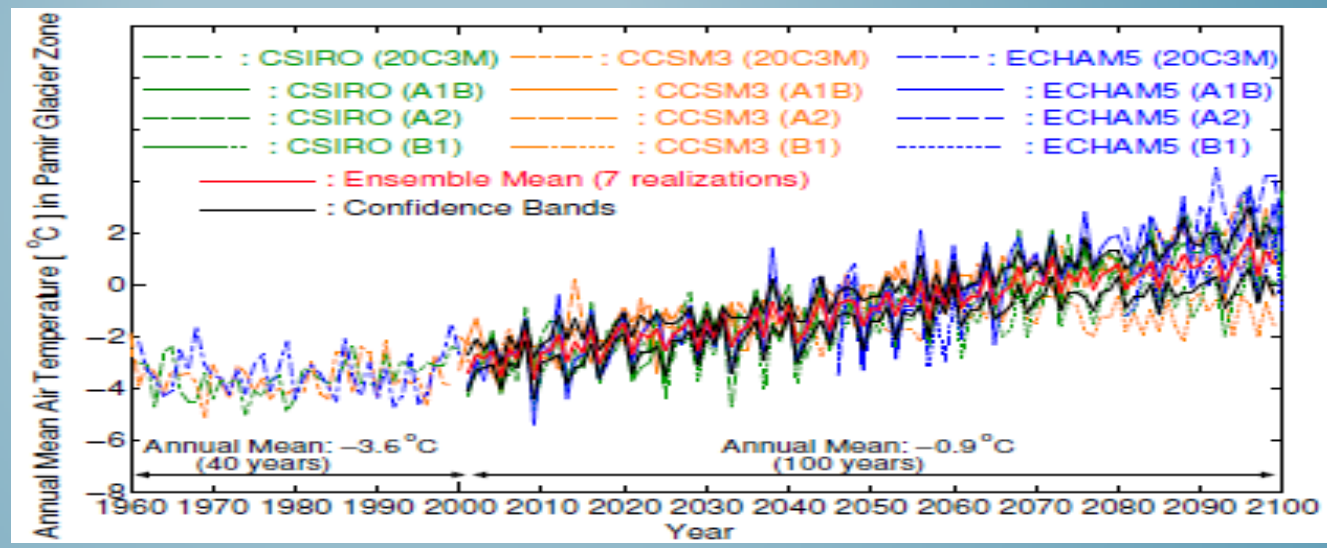


OBSERVED DECREASE IN FEDCHENKO GLACIER SURFACE

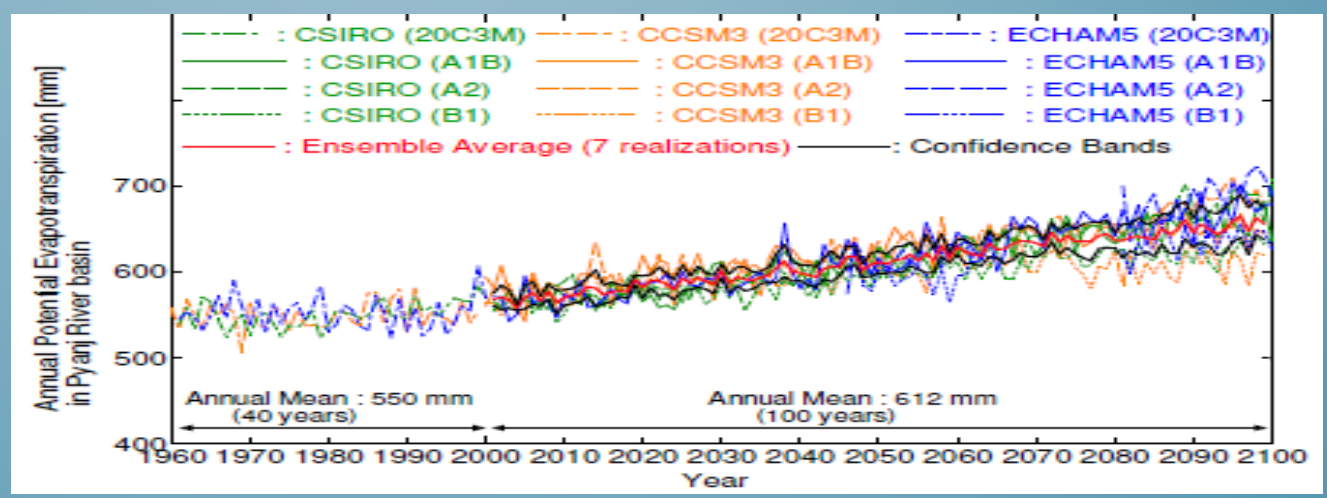




CONSISTENT INCREASE IN TEMPERATURE

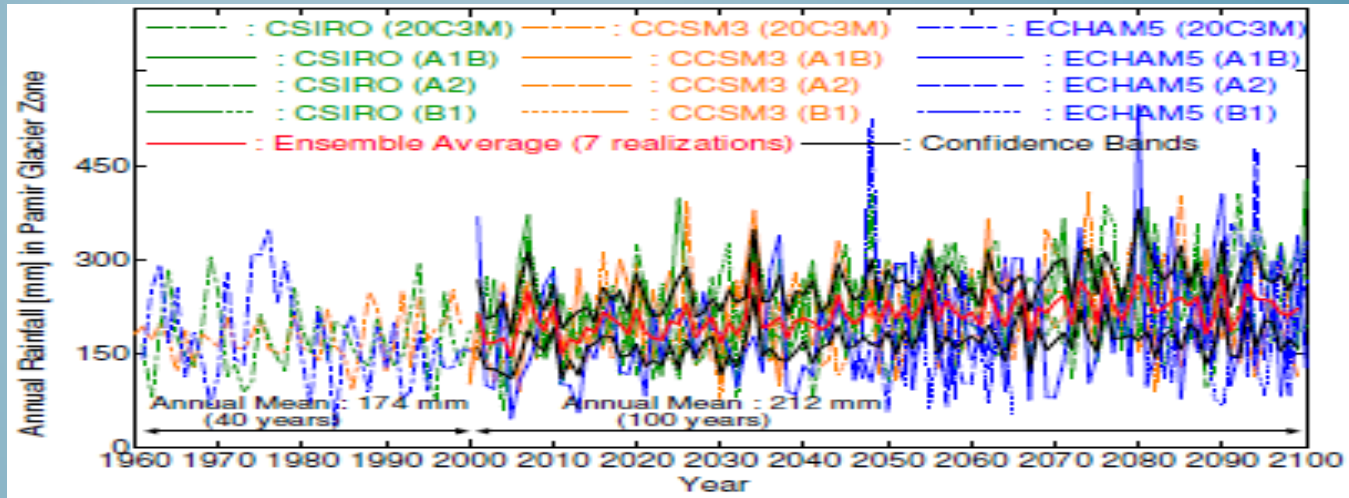


CONSISTENT INCREASE IN EVAPO TRANSPIRATION

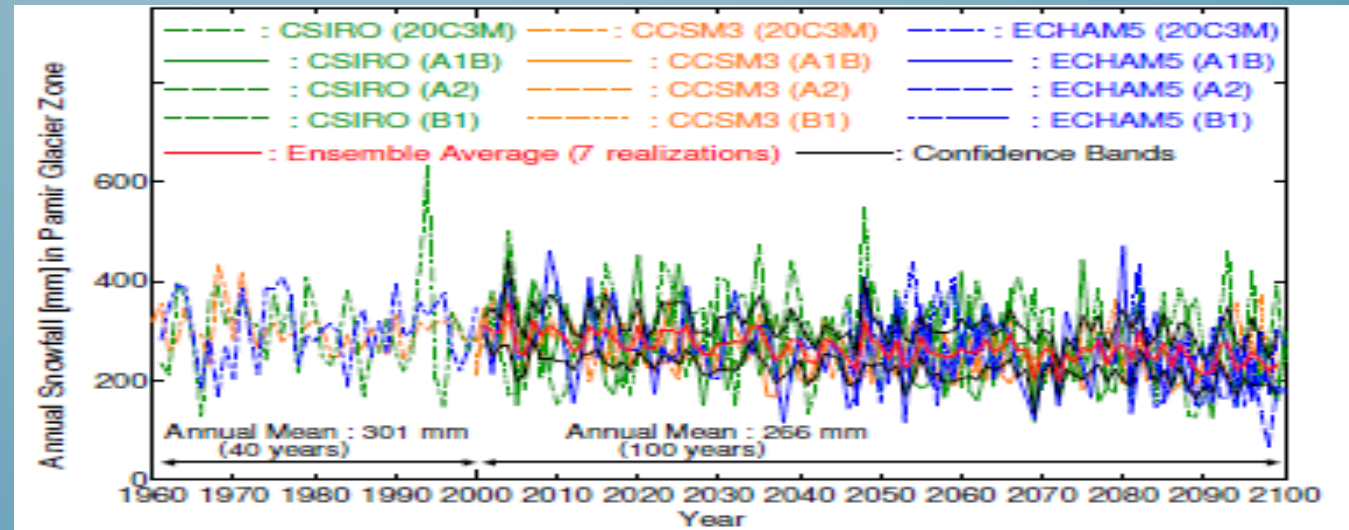




SLIGHT
INCREASE
IN
RAINFALL



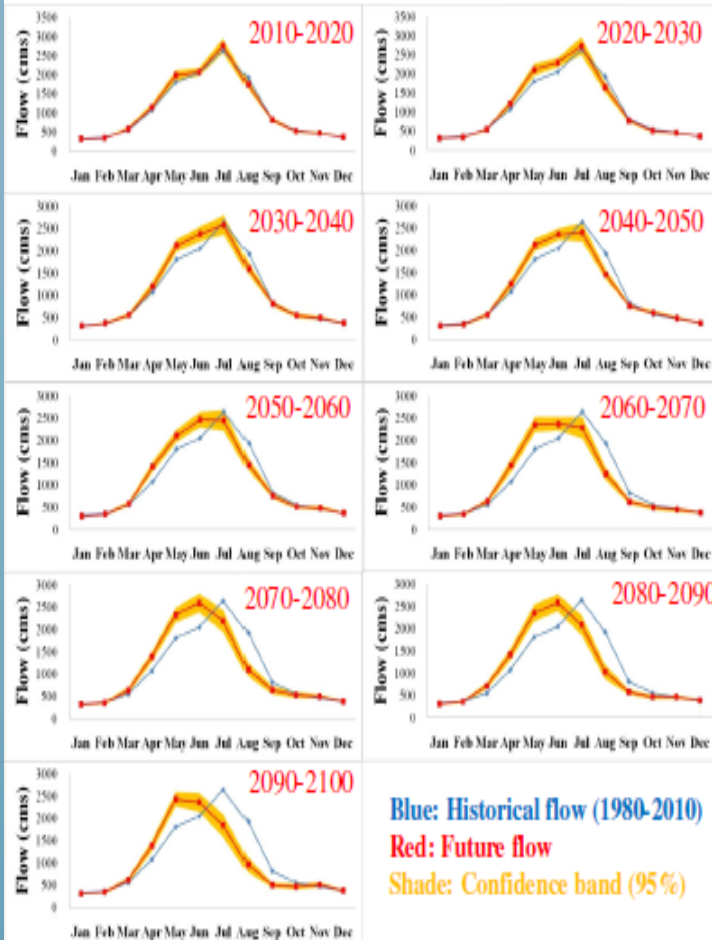
SLIGHT
DECREASE
IN
SNOWFALL



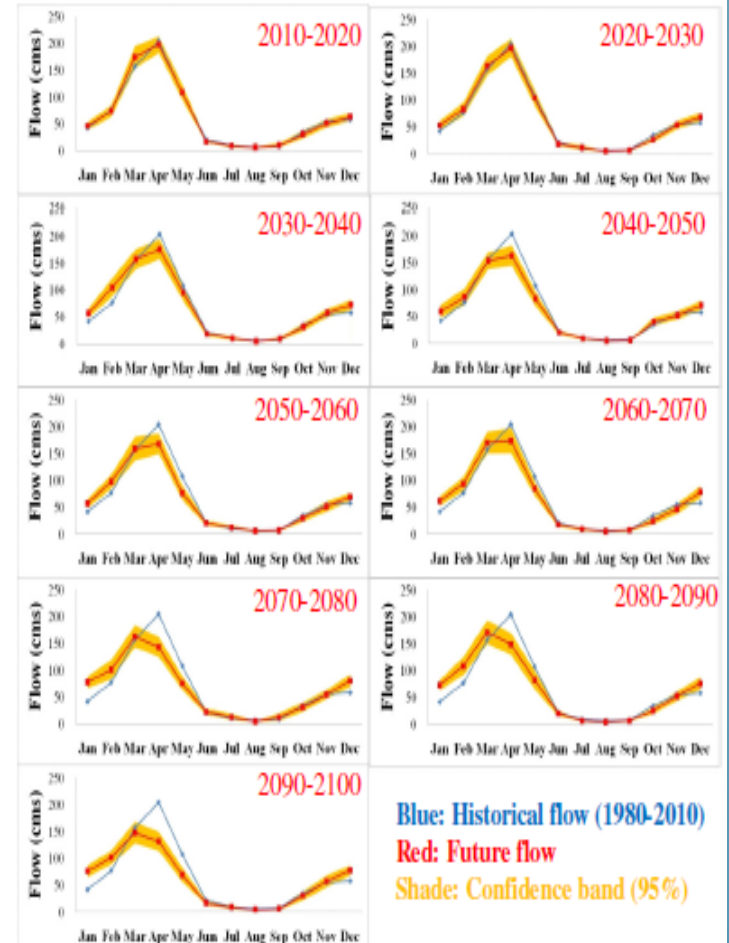


HIGH
FLOW
MONTHS
ARE
ARRIVING
EARLIER

Nizhniy Pyanj



Farkhor





WHAT DOES THIS MEAN TO PEOPLE & ECOSYSTEMS?

- Rain-fed agriculture increasingly risky
- Increase in water demand for irrigation
- Negative effects on people livelihoods upstream and downstream
- Slow down of economic growth and human development
- Let's ask people ...





WHAT WE NEED

- Robust data and information on the status of Glaciers in Central Asia
- Enhanced research, monitoring and observation
- Enhanced impact assessment and adaptation knowledge
- Regional cooperation to create knowledge hub and learn from each other
- Coordination with other mountainous initiatives – We all face similar challenges and aim to same goals
- Financial support for investments in capacity building
- Financial support for investments in infrastructure



MANY THANKS

FOR FURTHER INFORMATION PLEASE CONTACT



Climate Change Centre
ilhomrajabov@mail.ru

OR
PPCR Secretariat
secretariat@ppcr.tj