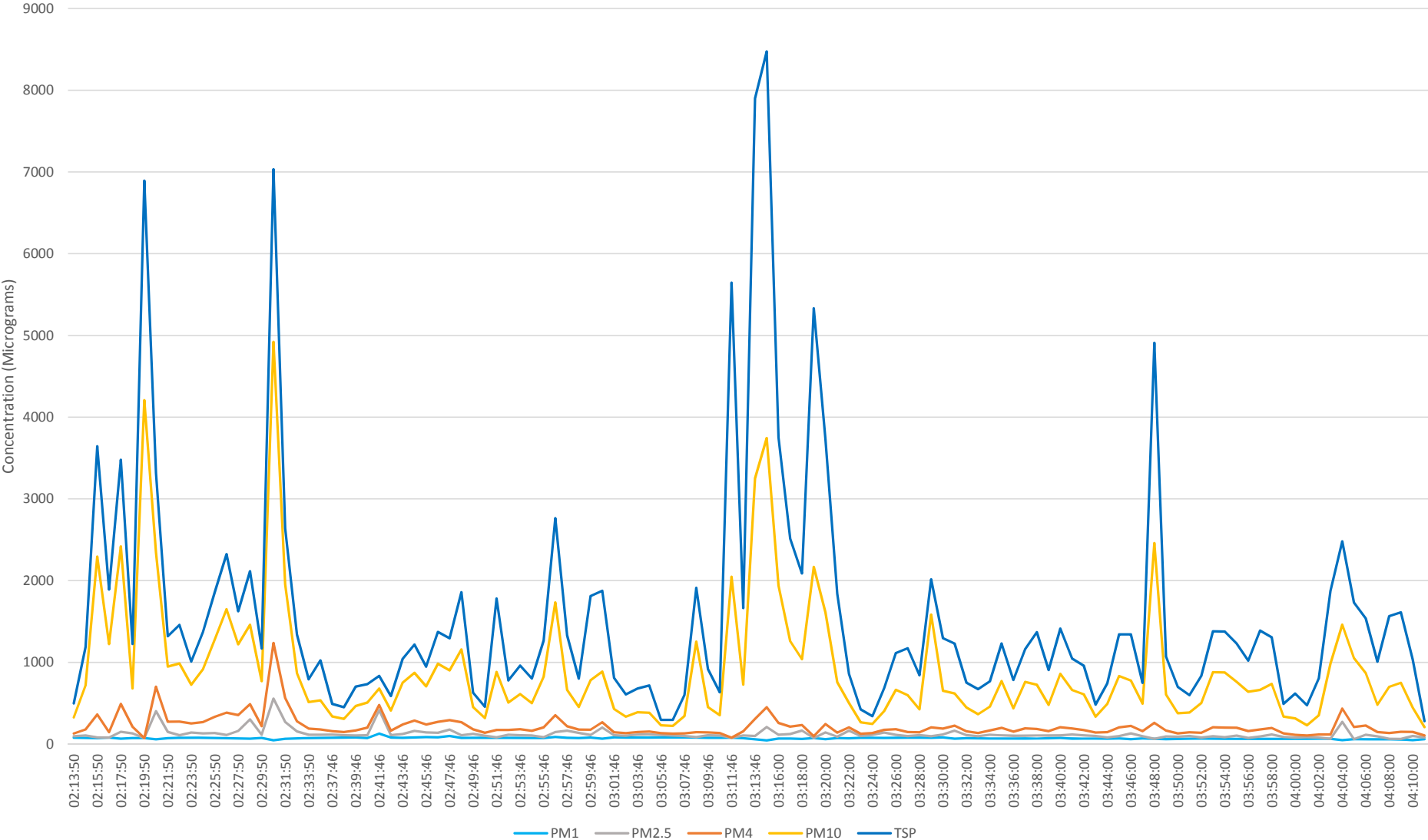


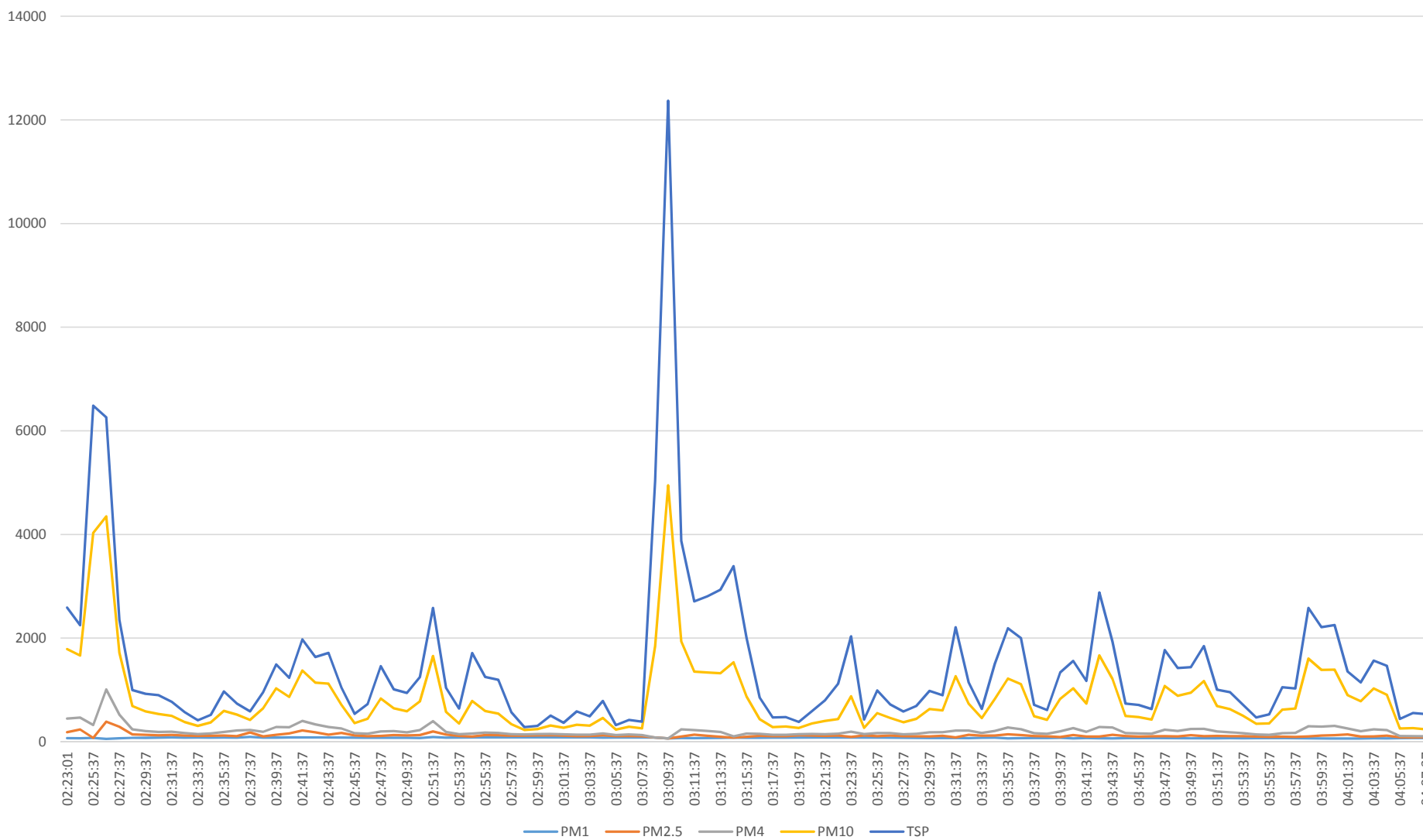
AIR
POLLUTION
SAMPLING
FROM
ICIMOD TO
NAGARKOT



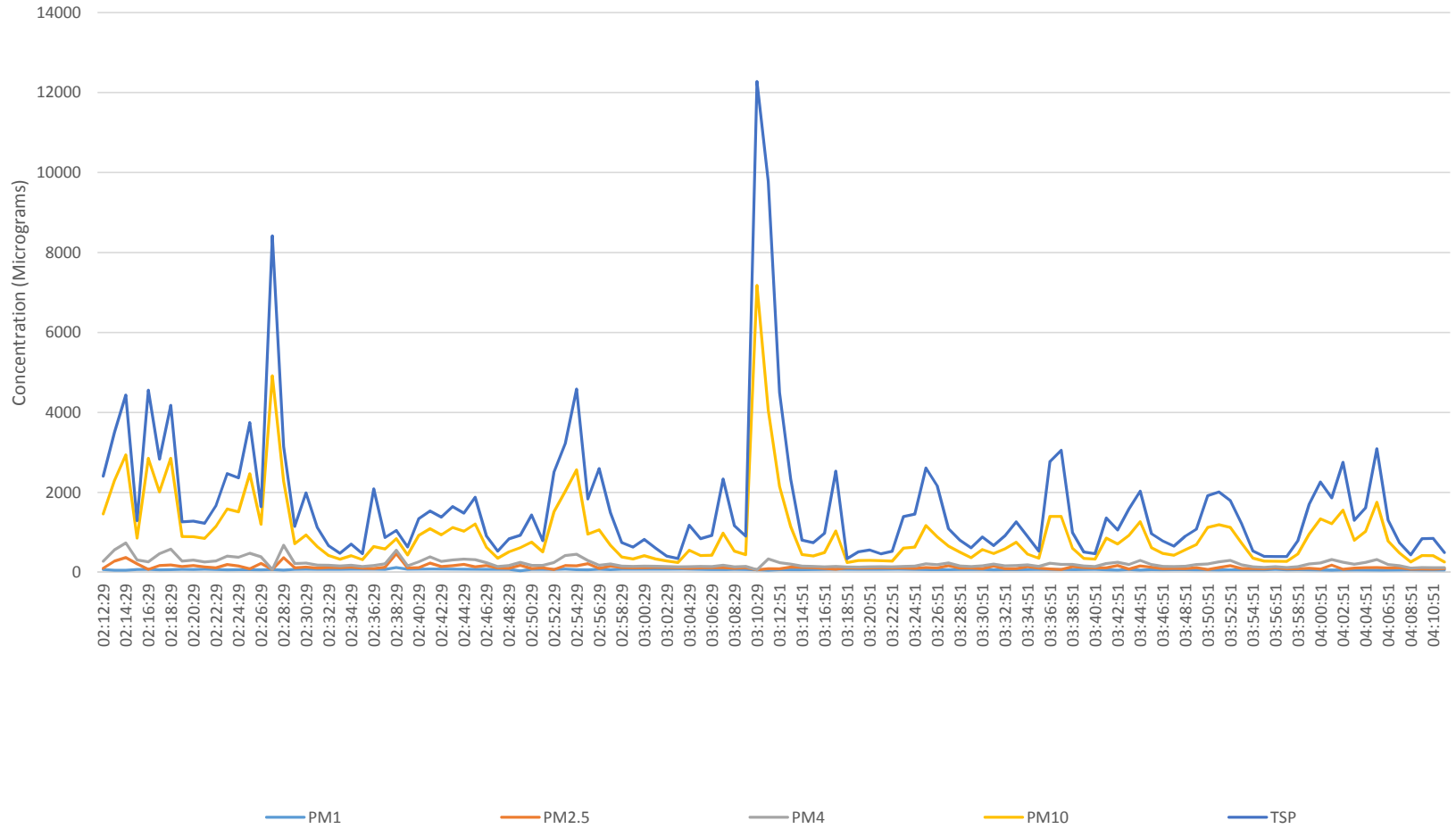
Particulate Matter Analysis (Set 1)

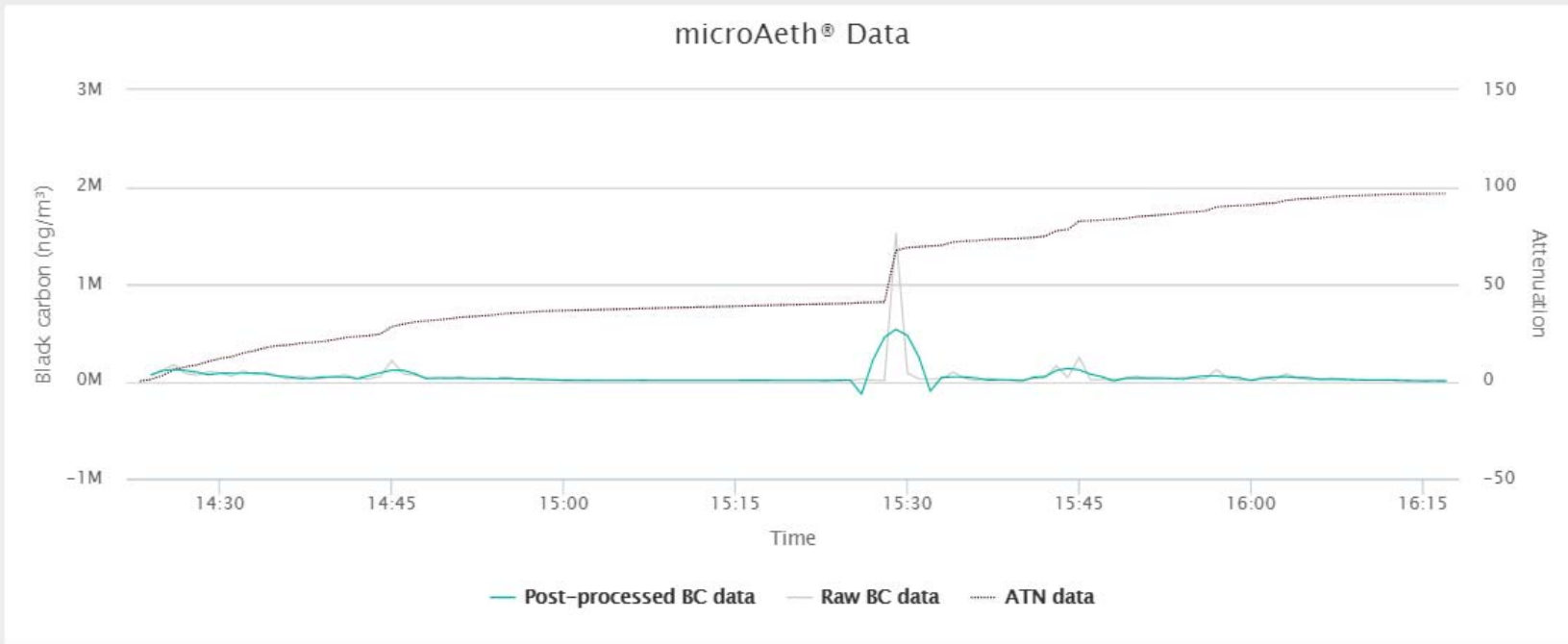


Particulate Matter Analysis (Set 2)



Particulate Matter Analysis (Set 3)





⚙ Settings

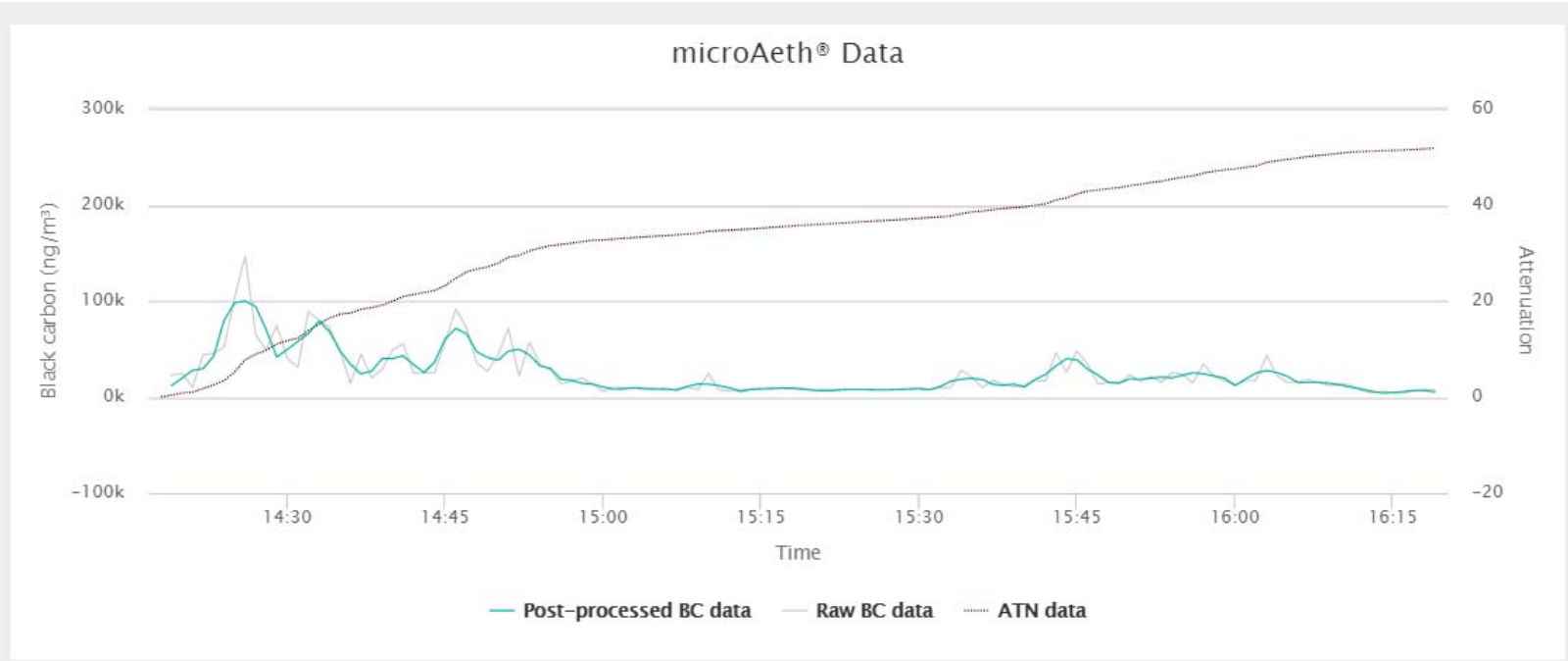
Application version: 2.2.4.0
 Sample air flow rate: 99 ml/min
 Sampling timebase: 60 seconds

🕒 Timing

Start time: Nov 16, 2015 - 2:23:00pm +0000
 End time: Nov 16, 2015 - 4:17:00pm +0000
 Total run time: 1 hour, 54 minutes

📊 Analytics

Average BC concentration: 48641 ng/m^3
 Air flow per sampling period: 0.099 liters
 Point-to-Point data variability: 31257 ng/m^3 deviation
 Deviation as BC increment: 43583.704 pg/cm^2
 Reference beam stability: 127 ppm stability
 Average reference beam intensity: 795030 counts
 Maximum sensing beam intensity: 910876 counts
 Accumulation on filter strip this run: 96.531 attenuation



Settings

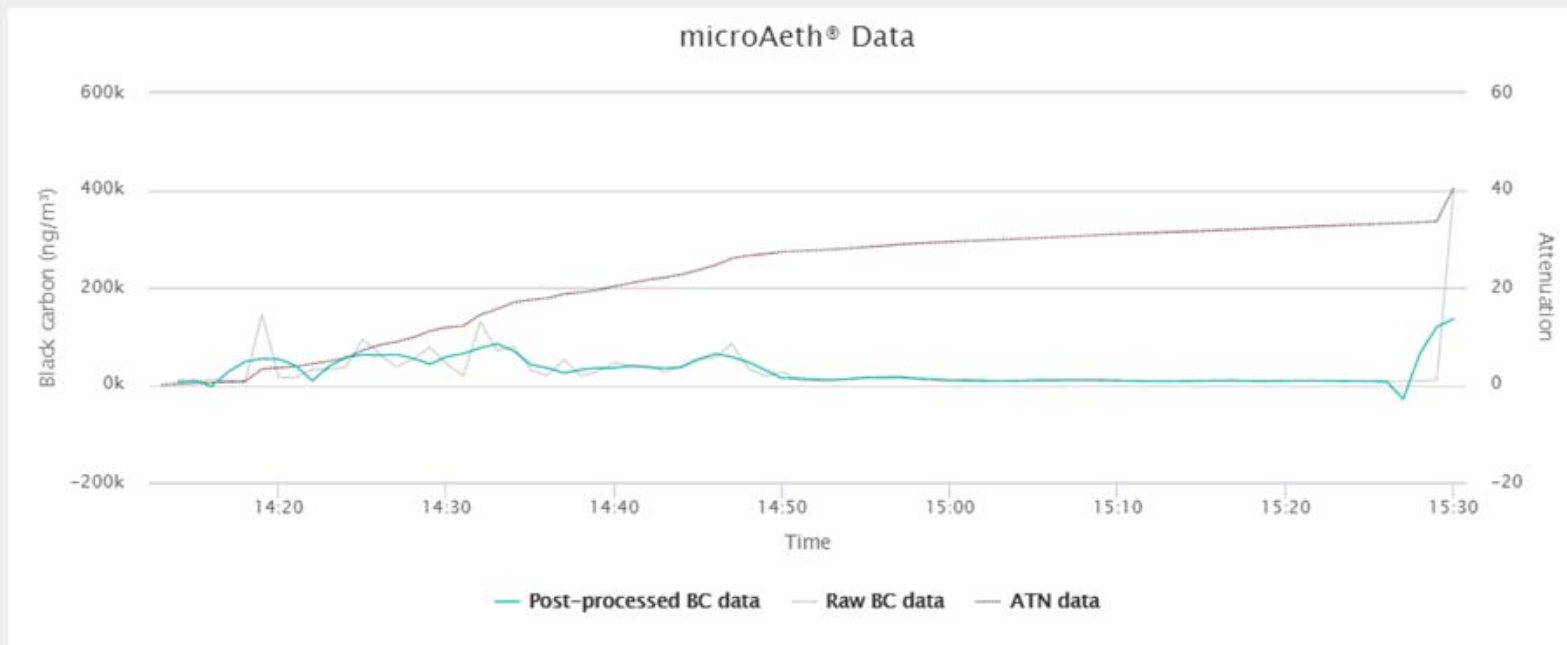
Application version: 2.2.4.0
 Sample air flow rate: 98 ml/min
 Sampling timebase: 60 seconds

Timing

Start time: Nov 16, 2015 - 2:18:00pm +0000
 End time: Nov 16, 2015 - 4:19:00pm +0000
 Total run time: 2 hours, 1 minute

Analytics

Average BC concentration: 24777 ng/m³
 Air flow per sampling period: 0.098 liters
 Point-to-Point data variability: 5645 ng/m³ deviation
 Deviation as BC increment: 7791.69 pg/cm²
 Reference beam stability: 130 ppm stability
 Average reference beam intensity: 886182 counts
 Maximum sensing beam intensity: 910086 counts
 Accumulation on filter strip this run: 51.771 attenuation



Settings

Application version: 2.2.4.0
 Sample air flow rate: 98 ml/min
 Sampling timebase: 60 seconds

Timing

Start time: Nov 16, 2015 - 2:13:00pm +0000
 End time: Nov 16, 2015 - 3:30:00pm +0000
 Total run time: 1 hour, 17 minutes

Analytics

Average BC concentration: 30370 ng/m³
 Air flow per sampling period: 0.098 liters
 Point-to-Point data variability: 12350 ng/m³ deviation
 Deviation as BC increment: 17046.479 pg/cm²
 Reference beam stability: 125 ppm stability
 Average reference beam intensity: 916799 counts
 Maximum sensing beam intensity: 832740 counts
 Accumulation on filter strip this run: 40.344 attenuation

g = gram

mg = milligram (1/1000 g)

μg = microgram (1/1000 mg = 1/1,000,000 g)

ng = nanogram (1/1000 μg = 1/1,000,000 mg = 1/1,000,000,000 g)